

Lightbars

Directional Warning

Perimeter Lighting

Control Systems

Sirens and Speakers

Electronics

Interior Lighting

Work Area Lighting



For over 27 years, SoundOff Signal has been a symbol of bright lights, safety, quality and performance.

We take pride in engineering trusted products for the nation's top police and security forces. Every light, every siren, every control system we produce comes with our fundamental promise of reliability, innovation and excellence.

We stand for the first responder community - from urban fleets, to rural towns and anywhere in-between - we make products to brighten your presence and showcase safety.

Lightbars	mpower® Exterior, Full Size	1
	mpower® Grid Light	2
	nFORCE® Exterior, Full Size	3
	nFORCE® 2 Exterior, Full Size	4
	nFORCE® Interior, Windshield	5
	nFUSE™ Exterior, Full Size	6
	MAGNUM Exterior, Full Size	7
	Pinnacle Exterior, Full Size	8
	Pinnacle Mini	9

Directional Warning	mpower® Arrow System	11
	nFORCE® Traffic Controller	12
	UltraLITEplus	13
	TrafficMaster Arrow	16

Perimeter Lighting	mpower® Fascia	17
	mpower® HD	18
	mpower® Perimeter White	21
	mpower® Fire/EMS	22
	ConfigureIT App	23
	nFORCE® Surface,	24, 25
	Deck/Grille, Recess and Windshield	



Perimeter Lighting

(continued)

Bolt 2 Surface.....	28
Fusion Lite Surface	28
Intersector Under Mirror	29
and Surface	
GHOST Surface, Deck/Grille.....	31, 32
and Recess	
ML6 Flush	33
LED3 plus Mini Surface	34
Universal UnderCover	35
nLINE.....	36

Control Systems

bluePRINT® 3	37
bluePRINT® 3 Link®	40
bluePRINT Sync™.....	41
SoundOff Signal®	42

Sirens and Speakers

Sirens	
500 Series Remote, Console	43
and Handheld	
400 Series Remote, Console	44
and Handheld	
200 Series Remote	46
LF Aftershock Siren System	47

(continued)

Speakers

100C Series	48
100J Series	49
100N Series	50

Electronics

Switches.....	51, 52
SW830 Multi-Purpose.....	53
Control Panel	
Flashers	54, 55
LED Module	55
Ignition Security Systems	56

Interior Lighting

Dome	57
Strip.....	58

Work Area

PAR46 Unity® Spot.....	59
Mighty Night, 400 Lumen Spot	60
GOLIGHT.....	60

Emergency Solutions
2020 Product Catalog

1.800.338.7337
www.soundoffsignal.com





Exterior Full Size Lightbars



Four Inch Module

EMPLB



Six Inch Module

EMPLB

● ● ● ● ○ To order configured products, contact your sales representative or customer service department.

Features

- At only 1" thick, mpower is 50% thinner than its leading competitors
- Silicone ClearDuty® molded one-piece housing and optic design delivers advantages over conventional polycarbonate lenses:
 - A smaller footprint with maximized candela output
 - Greater resistance to gravel pitting, scratching or cracking
 - Improved sealing to prevent water from entering light
 - Higher UV and thermal stability to prevent lens from yellowing over time

INPUT VOLTAGE RANGE	9-16 Vdc
---------------------	----------

NUMBER OF LEDS AND MAXIMUM CURRENT DRAW @ 12.8 VDC

Inboard Warning Module	<1 Amp
Corner Module	<1.9 Amp (Two 3" mpower modules)
Alley	<1 Amp

NUMBER OF LEDS AND MAXIMUM WATTAGE @ 12.8 VDC

	Four Inch Module	Six Inch Module
Inboard Warning Module	<5.9 Watts	<7.7 Watts
Corner Module	<11.6 Watts (Two 3" mpower modules)	<11.6 Watts (Two 3" mpower modules)
Alley	<5.9 Watts	<5.9 Watts

FLASH PATTERNS

Warning	66
Takedown/Alley	25
Arrow L/C/R	11

OPERATING TEMPERATURE	-40° C to +65° C / -40° F to +149° F
-----------------------	--------------------------------------

STANDBY CURRENT @ 12.8 VDC	<10mA
----------------------------	-------

DIMENSIONS	Four Inch Module	Six Inch Module
Lengths	8 Module: 44.2" (112 cm) 9 Module: 48.2" (112 cm) 10 Module: 52.7" (134 cm)	5 Module: 42" (107 cm) 6 Module: 48.4" (122 cm) 7 Module: 54.8" (139 cm)
Height	All modules: 1.1" (2.7 cm)	All modules: 1.1" (2.7 cm)
Depth	All modules: 10.6" (27 cm)	All modules: 10.6" (27 cm)

MOUNTS	Standard hook bracket mount with angle adjustment wedge Headache rack mount
--------	--

CERTIFICATIONS	SAE J595 and J845 Class 1 certified (red, blue, amber and white) CA Title 13 Class B certified (red, blue and amber) ECE R65 Cat T, Class 2 certified (red, blue and amber) EMC/ECE R10-5 certified
----------------	--

WARRANTY	Five-year (ten-year on UV lens discoloration)
----------	---

Grid Light



1x1 Single Stack



2x2 Single Stack



1x1 Dual Stack



2x2 Dual Stack

EMPG

Refer to the technical specifications for available mounting options.

● ● ● ● ○ To order configured products, contact your sales representative or customer service department.

Features

- Single, dual and tricolor capabilities
- ClearDuty® silicone molded optic design delivers advantages over conventional polycarbonate lenses
- Multiple mounting options: permanent, pipe, magnetic and mirror mounts
- Ability to spec 4-16 modules with single and dual stacked options
- Rugged construction with non-corrosive aluminum top/bottom and durable rubber corners
- Available in silver or black housing
- Current 3-wire four inch mpower lightbar module variants
- Synchronizes with other sync 2 products
- Secondary flash or steady burn options
- Environmentally-safe materials which allow disassembly after useable life; may be recycled

INPUT VOLTAGE RANGE	9-32 Vdc	
FLASH PATTERNS		
Single, Dual and Tricolor	Quint (SAE); Warp, Inter-Cycle; Double (SAE); Quad; Power Pulse; Road Runner (SAE/CaXIII); Q-Switch (SAE); Steady Burn + Flash; Roadrunner; Steady Burn + Flash; Quad; Quad 2 and Double 2	
Dual and Tricolor	Random 1 and Random 2	
OPERATING TEMPERATURE	-40° C to +85° C, thermal fold back may begin at temperatures above +50C ambient	
CIRCUIT PROTECTION	Reverse polarity, transient voltage and high temperature and over-voltage	
DIMENSIONS		
1x1 Single Stack	Length: 7.46" (19 cm)	Height: 1.5" (3.8 cm)
1x1 Dual Stack	Length: 7.46" (19 cm)	Height: 2.4" (6.1 cm)
2x2 Single Stack	Length: 11.71" (29.74 cm)	Height: 1.5" (3.8 cm)
2x2 Dual Stack	Length: 11.71" (29.74 cm)	Height: 2.4" (6.1 cm)
MOUNTS		
Mirror	Combo mount	
Magnetic	Combo or flat mount	
	Dual or quad mount	
CERTIFICATIONS		
	SAE J595 Class 1 certified	
	SAE J845 Class 2 certified	
	CA Title 13 certified	
	NFPA compliant	
WARRANTY		
	Five-year (ten-year on UV lens discoloration)	



Exterior Full Size Lightbar



ENFLB

Features

- Modules can be configured as single, dual or tricolor for maximum functionality
- Inboard modules are available in single color 6 or 9 LEDs, dual color 12 LEDs or tricolor 18 LEDs
- Corner modules are offered in single color 12 or 18 LEDs, dual color 24 LEDs or tricolor 30 LEDs

INPUT VOLTAGE RANGE		9-16 Vdc
NUMBER OF LEDS AND MAXIMUM CURRENT DRAW @ 12.8 VDC		
Inboard Warning Modules	6 LED Single Color: <1.0 Amp; 9 LED Single Color: <1.5 Amp; 12 LED Dual Color: <1.0 Amp or 18 LED Tricolor: <1.0 Amp	
Corner Modules	12 LED Single Color: <2.0 Amp; 18 LED Single Color: <3.0 Amp; 24 LED Dual Color: <2.0 Amp or 30 LED Tricolor: <2.0 Amp	
Takedown	6 LED Single Color: <1.0 Amp	
Alley	3 LED Single Color: <0.5 Amp	
NUMBER OF LEDS AND MAXIMUM WATTAGE @ 12.8 VDC		
Inboard Warning Modules	6 LED Single Color: <6.4 Watts; 9 LED Single Color: <9.6 Watts; 12 LED Dual Color: <6.4 Watts or 18 LED Tricolor: <6.4 Watts	
Corner Modules	12 LED Single Color: <12.8 Watts; 18 LED Single Color: <19.2 Watts; 24 LED Dual Color: <12.8 Watts or 30 LED Tricolor: <12.8 Watts	
Takedown	6 LED: <12.8 Watts	
Alley	3 LED: <6.4 Watts	
FLASH PATTERNS		
Warning	66	
Takedown/Alley	25	
Arrow L/C/R	11	
OPERATING TEMPERATURE		-40° C to +65° C / -40° F to +149° F
DIMENSIONS		
Lengths	2 Module: 24" (61 cm); 4 Module: 36" (91 cm); 5 Module: 42" (107 cm); 6 Module: 48" (122 cm); 7 Module: 54" (137 cm); 8 Module: 60" (152 cm) or 10 Module: 72" (183 cm)	
Height	All modules: 2.55" (6.5 cm)	
Depth	All modules: 12" (31 cm)	
MOUNTS		Standard hook kit mount with angle adjustment wedge Headache rack mount
CERTIFICATIONS		SAE J845/J595 Class 1 certified and California Title 13, Class B certified ECE R65 Category T, Class 2 certified (red or blue) and EMC/ECE R10-4 certified
WARRANTY		Five-year

ACCESSORIES

Lightbar sold separately.

Auto Dim Retrofit Kit

- Blue PNFLBTRDRLBL
 Graphite (shown) PNFLBTRDRLGY
 Red PNFLBTRDRLRD
 Amber Lexan Cover PNFLBTRDRLYL
- 
- Includes auto dim sensor board, harnesses, mounting hardware and top cover.

Retrofit Solar Panel Kit

- Top Cover Color
- Blue PNFLBTSGLLBL
 Gray PNFLBTSGLGLGY
 Red PNFLBTSGLGLRD
 Yellow PNFLBTSGLGLYL
- 
- Not available for the 24 inch lightbar.



Exterior Full Size Lightbar

Coming Soon!



ENFLB

Features

- Modules can be configured as single, dual or tricolor for maximum functionality
- Inboard modules are available in single color 6 or 9 LEDs, dual color 12 LEDs or tricolor 18 LEDs
- Corner modules are offered in single color 12 or 18 LEDs, dual color 24 LEDs or tricolor 30 and 36 LEDs
- Available with tricolor alleys

INPUT VOLTAGE RANGE	9-32 Vdc
NUMBER OF LEDS AND MAXIMUM CURRENT DRAW @ 12.8 VDC	
Inboard Warning Modules	6 LED Single Color: <1.0 Amp; 9 LED Single Color: <1.5 Amp; 12 LED Dual Color: <1.0 Amp or 18 LED Tricolor: <1.0 Amp
Corner Modules	12 LED Single Color: <2.0 Amp; 18 LED Single Color: <3.0 Amp; 24 LED Dual Color: <2.0 Amp or 30 LED Tricolor: <2.0 Amp
Takedown	6 LED Single Color: <1.0 Amp
Alley	3 LED Single Color: <0.5 Amp
NUMBER OF LEDS AND MAXIMUM WATTAGE @ 12.8 VDC	
Inboard Warning Modules	6 LED Single Color: <6.4 Watts; 9 LED Single Color: <9.6 Watts; 12 LED Dual Color: <6.4 Watts or 18 LED Tricolor: <6.4 Watts
Corner Modules	12 LED Single Color: <12.8 Watts; 18 LED Single Color: <19.2 Watts; 24 LED Dual Color: <12.8 Watts or 30 LED Tricolor: <12.8 Watts
Takedown	6 LED: <12.8 Watts
Alley	3 LED: <6.4 Watts
FLASH PATTERNS	
Warning	66
Takedown/Alley	25
Arrow L/C/R	11
OPERATING TEMPERATURE	-40° C to +65° C / -40° F to +149° F
DIMENSIONS	
Lengths	2 Module: 24" (61 cm); 4 Module: 36" (91 cm); 5 Module: 42" (107 cm); 6 Module: 48" (122 cm); 7 Module: 54" (137 cm); 8 Module: 60" (152 cm) or 10 Module: 72" (183 cm)
Height	All modules: 2.55" (6.5 cm)
Depth	All modules: 12" (31 cm)
MOUNTS	Standard hook kit mount with angle adjustment wedge Headache rack mount
CERTIFICATIONS	SAE J845/J595 Class 1 certified and California Title 13, Class B certified ECE R65 Category T, Class 2 certified (red or blue) and EMC/ECE R10-4 certified
WARRANTY	Five-year



Interior Windshield Lightbars



Adjustable plate enables lightbar to fit any windshield.

Universal, 3 Module

Split, Two-piece

ENFWBFS



4 Module

Split, Two-piece (shown)

Full, One-piece

ENFWBFS

ENFWBFF

● ● ● ● ○ To order configured products, contact your sales representative or customer service department.

Features

- Modules are offered in single color 6 or 9 LEDs, dual color 12 LEDs or tricolor 18 LEDs
- Windows-based PC application simplified programming and enhances configurability and control
- User configurable options include cruise mode, nighttime manual dimming, 34 programmable flash patterns and steady burn
- Direct connect option is available with single or dual color lightbars
 - The lightbar simplifies installation by eliminating the breakout box and connecting activation wires directly to the lightbar
- Takedown modules can be designated anywhere
- Universal model with adjustable mounting brackets accommodate most windshield angles for even broader vehicle compatibility
- Vehicle-specific shrouds available
- Easy connection with CAT5 from breakout box to light/siren controller

INPUT VOLTAGE RANGE		10-16 Vdc
NUMBER OF LEDS AND MAXIMUM CURRENT DRAW @ 12.8 VDC		
LED Modules	6 LED Single Color: <1.0 Amp; 9 LED Single Color: <1.5 Amps; 12 LED Dual Color: <1.0 Amp or 18 Tricolor: <1.0 Amp	
NUMBER OF LEDS AND MAXIMUM WATTAGE @ 12.8 VDC		
Inboard Warning Modules	6 LED Single Color: <6.4 Watts; 9 LED Single Color: < 9.6 Watts; 12 LED Color: < 6.4 Watts or 18 LED Tricolor: < 6.4 Watts	
Takedown	6 LED: <12.8 Watts (interior windshield)	
Work Light	8 <12.8 Watts (interior rear deck; 3 module only)	
FLASH PATTERNS		
Warning	34	
Arrow L/C/R	8	
OPERATING TEMPERATURE		-40° C to +65° C / -40° F to +149° F
DIMENSIONS		
	3 Module	4 Module
Length	14.3" (36 cm)	20" (51 cm)
Height	1" (2.5 cm)	1" (2.5 cm)
Depth	5" to 7.5" (12.7 cm to 19 cm) each side adjustable 7.5" (19 cm) (universal, each side)	
WARRANTY		Five-year



Exterior Full Size Lightbar

Coming Soon!



● ● ● ● ○ To order configured products, contact your sales representative or customer service department.

Features

- Slim profile, available in lengths from 36 to 72 inches
- Modules can be configured as single or dual color
- Lightbars with dual color modules that include white LEDs can provide a full 360 degrees of bright scene lighting
- Replaceable outer lens available in clear, amber, red or blue
- Arrow control modules can be combined with warning colors for maximum functionality
- Windows-based PC application to simplify programming, enhance configurability and control
- Over 50 flash patterns, including cruise mode, takedown and alley (when properly configured) and R/L/C arrow (when properly configured)
- Auto dimming

INPUT VOLTAGE RANGE	9-32 Vdc
---------------------	----------

OPERATING TEMPERATURE	-40° C to + 65° C / -40° F to + 149° F
-----------------------	--

DIMENSIONS

Lengths	14 Module: 36" (91.4 cm)
	16 Module: 42" (106.7 cm)
	18 Module: 48" (121.9 cm)
	20 Module: 54" (137.2 cm)
	22 Module: 60" (152.4 cm)
	26 Module: 72" (182.8 cm)

MOUNTS	Standard hook bracket mount with wide angle adjustments Headache rack mount
--------	--

CERTIFICATIONS	SAE J845/J595 Class 1 certified CA Title 13, Class B certified
----------------	---

WARRANTY	Five-year
----------	-----------

MAGNUM

Exterior Full Size Lightbar



EMG2000

● ● ● ● ○ To order configured products, contact your sales representative or customer service department.

Features

- Available in clear or amber lenses
- Replaceable outer lens
- Dimming capability
- 6 LED inboard modules deliver Fusion Boost technology for extreme brightness
- 3 LED inboard modules designed with a new Turbo Optic to deliver maximum intensity at an affordable price
- 6 or 12 LED corner modules
- Optional rear stop/turn modules available
- Optional 12 wire discrete harness allows operation without break-out box (10-30 Vdc only)

INPUT VOLTAGE RANGE	10-16 Vdc or 10-30 Vdc
----------------------------	------------------------

NUMBER OF LEDS AND MAXIMUM CURRENT DRAW @ 12.8 VDC

Inboard Warning Modules	3 LED Single Color: <0.5 Amp; 6 LED Single Color: <1.0 Amp or 12 LED Dual Color: <1.0 Amp
Corner Modules	6 LED Single Color: <1.0 Amp or 12 LED Dual Color: <1.6 Amp
Takedowns	3 LED: <0.42 Amp; 6 LED: <0.84 Amp or 9 LED: <1.26 Amp
Alley	3 LED: <0.42 Amp

NUMBER OF LEDS AND MAXIMUM WATTAGE @ 12.8 VDC

Inboard Warning Modules	3 LED Single Color: <3.2 Watts; 6 LED Single Color: <6.4 Watts or 12 LED Dual Color: <6.4 Watts
Corner Modules	6 LED Single Color: <6.4 Watts or 12 LED Single Color: <10.2 Watts
Takedowns	3 LED: <2.7 Watts; 6 LED: <5.4 Watts or 9 LED: <8.1 Watts
Alley	3 LED: <2.7 Watts

FLASH PATTERNS

Warning	21
Takedown	5
Alley	5
Arrow L/C/R	4
Arrow Warning	Solid 9 or Split 17

OPERATING TEMPERATURE	-40° C to +65° C / -40° F to +149° F
------------------------------	--------------------------------------

DIMENSIONS

Lengths	2 Module: 23" (58.4 cm); 4 Module: 35.5" (90.2cm); 5 Module: 42" (106 cm) or 6 Module: 48" (12.9 cm)
Height	All modules: 2.3" (5.8 cm)
Depth	All modules: 12.3" (31.2 cm)

MOUNTS

Headache mount
Low profile fixed mount

OPTIONS

Rear split arrow is available with 6 or 12 LED dual color modules

CERTIFICATIONS

SAE J845/J595 Class 1 certified
Article 22, CA Title 13 compliant
ECE R10-4 EMC certified; ECE R65 Category T, Class 1 certified (amber)
ECE R65 Category T, Class 2 certified (red and blue)

WARRANTY

Five-year



Exterior Full Size Lightbar



EPL9000

● ● ● ● ○ To order configured products, contact your sales representative or customer service department.

Features

- Fusion Technology, the optic is designed like a lighthouse to boost the light farther and wider for a brighter, safer warning signal
- Streamlined, modular design is easy to maintain with field replaceable modules that are easily upgradeable
- Clear or color lenses in blue, red or amber
- 6 or 12 LED dual color arrow option available
- Dimming capability

INPUT VOLTAGE RANGE 10-16 Vdc

NUMBER OF LEDS AND MAXIMUM CURRENT DRAW @ 12.8 VDC

Inboard Warning Modules	6 LED Single Color: <1.0 Amp 12 LED Dual Color: <1.0 Amp
Corner Module	12 LED Single Color: <2.0 Amp
Takedown	6 LED: <1.0 Amp
Alley	1 LED: <0.5 Amp

NUMBER OF LEDS AND MAXIMUM WATTAGE @ 12.8 VDC

Inboard Warning Modules	6 LED Single Color: <6.4 Watts 12 LED Dual Color: <6.4 Watts
Corner Module	12 LED Single Color: <12.8 Watts
Takedown	6 LED: <12.8 Watts
Alley	1 LED: <6.4 Watts

FLASH PATTERNS

Warning	21
Takedown	5
Alley	5
Arrow L/C/R	4
Arrow Warning	Solid 9 or Split 17

OPERATING TEMPERATURE -40° C to +65° C / -40° F to +149° F

DIMENSIONS

Lengths	4 Module: 36" (91 cm); 5 Module: 42" (107 cm); 6 Module: 48" (122 cm); 7 Module: 54" (137 cm); 8 Module: 60" (152 cm) or 9 Module: 72" (183 cm)
Height	All modules: Inboard: 1.75" (4.45 cm) and corner: 2.5" (6.35 cm)
Depth	All modules: 10" (25 cm)

MOUNTS

Adjustable mount
Headache mount
Low profile fixed mount

CERTIFICATIONS

SAE J845 and J595 Class 1 certified
Article 22, CA Title 13 certified

WARRANTY

Five-year



7000 and 7100 Mini Lightbars



EPL7000

Clear Dome

Magnetic with Cig Plug
 Standard Permanent (shown)
 High Permanent
 Standard Permanent (25 foot cable)
 High Permanent (25 foot cable)

EPL7M+(x)C
 EPL7PD(x)C
 EPL7HD(x)C
 EPL7PF(x)C
 EPL7HF(x)C

Replace (x) in the Order Number for Standard Color Selection

Solid Colors

A = ● B = ● R = ● W = ○ G = ●

Split Colors

D = ●○ E = ●○ F = ●○ J = ●● K = ●● M = ●● H = ●○ L = ●● N = ●● P = ●●



EPL7100

Clear Dome

Magnetic Mount

Amber LEDs
 Amber/White LEDs
 Red/Amber LEDs
 Blue/Amber LEDs
 Green Solid/Split LEDs

EPL71M+AC
 EPL71M+FC
 EPL71M+KC
 EPL71M+MC
 EPL71M+(x)C

Standard Permanent Mount

Amber LEDs
 Amber/White LEDs (shown)
 Red/Amber LEDs
 Blue/Amber LEDs

EPL71PDAC
 EPL71PDFC
 EPL71PDKC
 EPL71PDMC

High Permanent Mount

Amber LEDs
 Amber/White LEDs
 Red/Amber LEDs
 Blue/Amber LEDs

EPL71HDAC
 EPL71HDFC
 EPL71HDKC
 EPL71HDMC

Replace (x) in the Order Number for Standard Color Selection

Solid Color

G = ●

Split Colors

H = ●○ L = ●● N = ●● P = ●●

● ● ● ● ○ To order configured products, contact your sales representative or customer service department.

PINNACLE 7000 and 7100 Mini Lightbars

Features

- Magnetic mount has cig plug with 2-button switch panel (on, off and flash pattern advance)
 - Red LED indicator light and 10' cord length
 - 4 extra strong magnets each with an 85 pound pull each to prevent the lightbar from slipping or moving

INPUT VOLTAGE RANGE	10-16 Vdc
CURRENT DRAW	2 Amp average @ 12.8 Vdc
LED COUNT	24 LEDs
FLASH PATTERNS	28
OPERATING TEMPERATURE	-40° C to +65° C / -40° F to +149° F
DIMENSIONS	
Length	14.16" (36 cm)
Height	1.90" (4.8 cm)
Depth	8.27" (21 cm)
MOUNTS	Magnetic mount Permanent mount High Permanent mount
CERTIFICATIONS	
7000	SAE J845 Class 1 certified (blue or red solid color LEDs)
7100	SAE J845 Class 1 certified (amber solid color LEDs)
WARRANTY	Five-year

ACCESSORY

Lightbar sold separately.



VHB Magnetic Plate Adapter Kit

Kit includes (1) one VHB pad and metal plate

PNRLBK03

Additional mounting options when using non-magnetic mounting surfaces

Note: 4 (four) plate adapter kits are required for the mini lightbar



Arrow System



EMPAK

● ● ● ● ○ To order configured products, contact your sales representative or customer service department.

Non-bracket option available; parts sold separately

Configured product includes:

- 3- or 4-module bracket (modules based on vehicle model)
- mpower 4 inch 3-wire lights (quantity based on vehicle model)

Features

- Warning arrow greatly reduces install time through use of 3-wire technology
- Functionality mimics the rear of a lightbar
- Integrates under the spoiler of the vehicle for a seamless look
- Available in single, dual or tricolor



Shown: Chevrolet Tahoe Arrow System (sold in pairs)

INPUT VOLTAGE RANGE	9-32 Vdc
CURRENT STANDBY	< 1.0 Amp @ 12.8 Vdc, < 0.5 Amp @ 25.6 Vdc
FLASH PATTERNS	28 Single, 22 Dual or 19 Tricolor patterns
OPERATING TEMPERATURE	-40° C to +65° C
CERTIFICATIONS	SAE J595 Class 1 certified, SAE J845 Class 1 certified and CA Title 13, Article 22 compliant
WARRANTY	Five-year

ACCESSORIES

Lights and replacement modules sold separately.

BRACKETS

Rear Spoiler, Stud Mounts

Chevrolet	Tahoe, Suburban, Yukon and Yukon XL, 2015-2018	
	Three inch Fascia light	PMP2RSBTH3
	Four inch Fascia light	PMP2RSBTH4
Ford	PI Utility, 2011-2019	
	Three inch Fascia light	PMP2RSBUV3
	Four inch Fascia light	PMP2RSBUV4

mpower Traffic Controller
Coming Summer 2020!



Interior Traffic Controller



4 Module	ENFTCDGS1204
6 Module (shown)	ENFTCDGS1206
8 Module	ENFTCDGS1208

● ● ● ● ○ To order configured products, contact your sales representative or customer service department.

Features

- Designed and tested to withstand tough working applications and extreme weather environments
- Modules can be specified in any combination of single color 6 or 9 LED, dual color 12 LED or tricolor 18 LED counts
- Modules that utilize white LEDs can be specified as work lights or flood lighting
- Manual dimming capability for nighttime use
- Cruise mode
- Use of PC application in conjunction with SoundOff Signal® sirens simplifies install with "plug and play" RJ45 capability
- Standard "L" shaped mounting brackets are included

INPUT VOLTAGE RANGE 10-16 Vdc

NUMBER OF LEDs AND MAXIMUM CURRENT DRAW @ 12.8 Vdc

6 LED Single Color: <1.0 Amp; 9 LED Single Color: <1.5 Amp; 12 LED Dual Color: <1.0 Amp or 18 LED Tricolor: <1.0 Amp

NUMBER OF LEDs and MAXIMUM WATTAGE @ 12.8 Vdc

6 LED Single Color: <6.4 Watts; 9 LED Single Color: <9.6 Watts; 12 LED Dual Color: <6.4 Watts or
18 LED Tricolor: <6.4 Watts

FLASH PATTERNS

Warning	34
Arrow	8

OPERATING TEMPERATURE -40° C to + 65° C / -40° F to +149° F

DIMENSIONS

Lengths	4 Module: 19" (48.3 cm); 6 Module: 26.7" (67.8 cm) or 8 Module: 35.5" (90 cm)
Height	All Modules: 1.9" (4.7 cm)
Depth	All modules: 2.47" (6.3 cm)

CERTIFICATION SAE J845 Class 1 certified

WARRANTY Five-year

UltraLITE plus

Exterior Directional Warning Bar with Arrow Ends



12 Module, 15 foot harness **EL3PA12A00A**
 12 Module, 25 foot harness **EL3PA12A01A**

Features

- New addition to our UltraLITEplus product line
- Six module arrow heads provide direct, visual communication to oncoming traffic

INPUT VOLTAGE RANGE	10-16 Vdc
CURRENT DRAW	10 Amps Peak, 5 Amp avg. with 50% duty cycle flash pattern
FLASH PATTERNS	Warning, arrow or default
OPERATING TEMPERATURE	-40° C to +85° C
DIMENSIONS	
Length	51.75" (131.45 cm)
Height	21.5" (54.6 cm)
Depth	1.5" (3.8 cm)
MOUNTING	Attachment brackets (included)
WARRANTY	Five-year

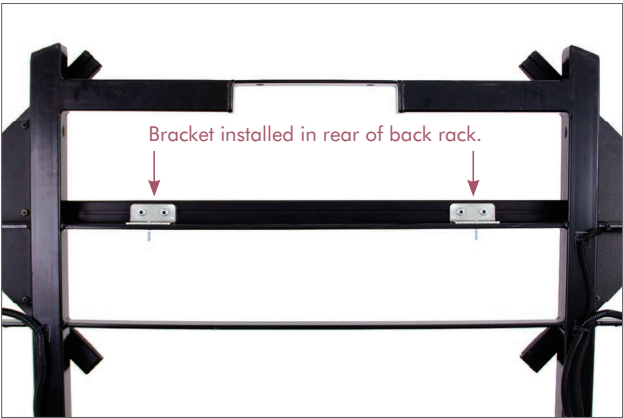
ACCESSORY

Directional warning bar and back rack sold separately.

Back Rack Bracket Kit **PUL3BRM**
 Includes two mounting brackets and hardware

Features

- Attaches back of arrow to cross bar of the back rack



UltraLITE plus

Directional Warning Bars



Exterior



Interior

Exterior Directional Warning

Solid and Split Colors

2 Module	EL3PD02A00(x)
4 Module	EL3PD04A00(x)
8 Module	EL3PD08A00(x)

Single Warning Ends, Amber Center

8 Module	EL3PD08A10(x)
----------	---------------

Single Warning Ends, Amber Center

(flashes independent from arrow)

8 Module	EL3PD08B10(x)
12 Module	EL3PD12A00(x)

Single Warning Ends, Amber Center

12 Module	EL3PD12A10(x)
-----------	---------------



Interior Windshield

Solid and Split Colors

2 Module	EL3PH02A0+(x)
4 Module	EL3PH04A0+(x)

Interior Directional Warning

Solid and Split Colors

4 Module	EL3PH04A00(x)
8 Module	EL3PH08A00(x)

Single Warning Ends, Amber Center

8 Module	EL3PH08A10(x)
----------	---------------

Single Warning Ends, Amber Center

(flashes independent from arrow)

8 Module	EL3PH08B10(x)
12 Module	EL3PH12A00(x)

Single Warning Ends, Amber Center

12 Module	EL3PH12A10(x)
-----------	---------------

Dual Warning Ends, Amber Center

12 Module	EL3PH12A20(x)
	EL3PZ12A00(x)

Single Warning Ends, Amber Center

(flashes independent from arrow)

12 Module	EL3PH12B10(x)
-----------	---------------

Dual Warning Ends, Amber Center

(flashes independent from arrow)

12 Module	EL3PH12B20(x)
-----------	---------------

Windshield Mount

8 Module	EL3PZO8A00(x)
12 Module	EL3PZ12A00(x)

Replace (x) in the Order Number for Standard Color Selection

Solid Colors A = ● B = ● G = ● R = ● W = ○

Split Colors A = ● B = ● R = ● W = ○ D = ● E = ● F = ● H = ● J = ● K = ● L = ● M = ● N = ● P = ●

● ● ● ● ○ To order configured products, contact your sales representative or customer service department.

UltraLITE plus

Directional Warning Bars

Features

Exterior

- Custom color configurations offered for exterior 4, 8 or 12 module bars
- 8 and 12 module warning bars can be programmed to flash three separate warning patterns controlled by discrete input wires
- Includes universal "L" brackets and 14 feet of cable

Windshield

- Includes permanent headliner brackets (pair) and 11.5 feet of shielded cable
- Suction cup and cig plug mounts include universal headliner brackets (pair)

Interior

- Slim, narrow design is perfect for headliner, dash, windshield or rear deck mounts in all types of vehicles
- Program up to three warning patterns on the 8 or 12 module, dual or split color bars
- Includes universal "L" brackets and 14 feet of cable

INPUT VOLTAGE RANGE 10-16 Vdc

CURRENT DRAW @ 12.8 VDC

Suction Cup Mount and Headliner Mount <1 Amp per module
<1 Amp for every 2 modules (flash pattern dependent)

FLASH PATTERNS

Suction Cup Mount and Headliner Mount 2 Module: 33 flash patterns; 4 Module: 21 flash patterns; 8 Module: solid colors, 20 arrow or 12 warning, split colors, 19 warning flash patterns or 12 Module: solid colors, 20 arrow or 12 warning, split colors, 19 warning flash patterns

LED COUNTS 2 Module: 12 LEDs; 4 Module: 24 LEDs; 8 Module: 48 LEDs or 12 Module: 72 LEDs

OPERATING TEMPERATURE -40° C to +65° C / -40° F to +149° F

DIMENSIONS

Lengths 2 Module: 6.9" (18 cm); 4 Module: 13.25" (34 cm); 8 Module: 26" (66 cm) or 12 Module: 38.75" (98 cm)
Height All modules: 1.5" (3.8 cm)
Depth All modules: 1.5" (3.8 cm)

Suction Cup Mount and Headliner Mount

Lengths 2 Module: 7" (18 cm); 4 Module: 14.25" (34 cm); 8 Module: 26" (66 cm) or 12 Module: 38.75" (98 cm)
Height All modules: 1.5" (3.8 cm)
Depth All modules: 3.6" (9.1 cm)

CERTIFICATIONS

SAE J595 Class 1 certified
Article 22, CA Title 13 compliant

WARRANTY

Five-year

ACCESSORIES: Exterior and Interior

Directional warning bar sold separately.

Visor

Chevrolet Tahoe, pair

PUL3M02

Universal Brackets

One hole, 1.5 inches, pair
Two holes, 2 inches, pair
Three holes, 2.5 inches, pair
Seven holes, 4 inches, pair

PUL3DGM01
PUL3DGM02
PUL3DGM03
PUL3DGM

TrafficMaster

Exterior Directional Arrow Warning Bars



Solid Arrow

8 Module

ETT3MLED-P



Split Arrow

8 Module

ETT3MLEDSA

Features

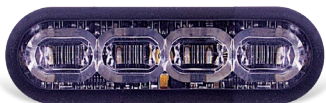
- Includes control box and mounting brackets
- Control box features illuminated display to show flash pattern selected and 5-position rotary switch to control all primary functions
- Eight sealed weatherproof modules
- Hard wire installation with 25' cable

INPUT VOLTAGE RANGE	10-30 Vdc
CURRENT DRAW	2.2 Amps max
LED COUNT	168 LEDs
FLASH PATTERNS	2 warning patterns and 6 arrow patterns
OPERATING TEMPERATURE	-30° C to +65° C / -22° F to +149° F
DIMENSIONS	
Solid Arrow	
Length	42" (107 cm)
Height	2.75" (7 cm)
Depth	1.75" (4.5 cm)
Split Arrow	
Length	21" (53 cm) (each end)
Height	2.75" (7 cm)
Depth	1.75" (4.5 cm)
MOUNTING	Surface mount (brackets included)
WARRANTY	Five-year



Fascia Lights

Stud Mounts



Three Inch

4 LED, Single Color

8 LED, Single or Dual Colors

12 LED, Tricolor

EMPS1SLS1(x)

EMPS1SLS3(x)

EMPS1SLS4(xxx)

Three Inch, Ford Grille Mount Application

4 LED, Single Color

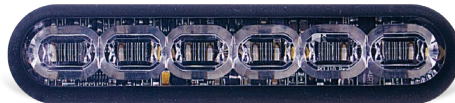
8 LED, Single or Dual Colors

12 LED, Tricolor

EMPS1STS1(x)

EMPS1STS3(x)

EMPS1STS4(xxx)



Four Inch

6 LED, Single Color

8 LED, Single Color

12 LED, Dual Color

18 LED, Tricolor

EMPS2STS2(x)

EMPS2STS3(x)

EMPS2STS4(x)

EMPS2STS5(xxx)

Spot, Four Inch

6 LED, Single Color

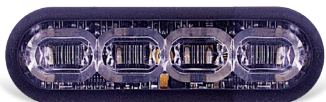
EMPS202KG(x)

Flood, Four Inch

6 LED, White LEDs

EMPS202KR-W

Quick Mounts



Three Inch

4 LED, Single Color

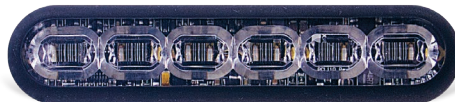
8 LED, Single or Dual Colors

12 LED, Tricolor

EMPS1QMS1(x)

EMPS1QMS3(x)

EMPS1QMS4(xxx)



Four Inch

6 LED, Single Color

8 LED, Single Color

12 LED, Dual Color

18 LED, Tricolor

EMPS2QMS2(x)

EMPS2QMS3(x)

EMPS2QMS4(x)

EMPS2QMS5(xxx)

Spot, Four Inch

6 LED, Single Color

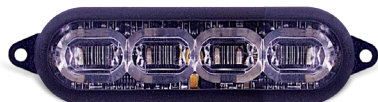
EMPS202KE(x)

Flood, Four Inch

6 LED, White LEDs

EMPS202KE(x)-W

Screw Mounts



Three Inch

4 LED, Single Color

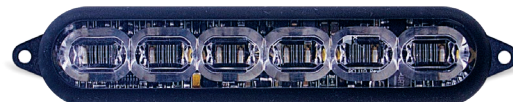
8 LED, Single or Dual Colors

12 LED, Tricolor

EMPS1SMS1(x)

EMPS1SMS3(x)

EMPS1SMS4(xxx)



Four Inch

6 LED, Single Color

8 LED, Single Color

12 LED, Dual Color

18 LED, Tricolor

EMPS2SMS2(x)

EMPS2SMS3(x)

EMPS2SMS4(x)

EMPS2SMS5(xxx)

Spot, Four Inch

6 LED, Single Color

EMPS202KF(x)

Flood, Four Inch

6 LED, White LEDs

EMPS202KQ-W

mpower® HD Light



Four Inch

6 LED, Single Color
8 LED, Single Color
12 LED, Dual Color
18 LED, Tricolor

EMPS4STS2(x)
EMPS4STS3(x)
EMPS4STS4(x)
EMPS4STS5(xxx)

Replace (x) or (xxx) in the Order Number for Standard Color Selection

4, 6 or 8 LED Single Colors	A = ● B = ● R = ● W = ○
8 or 12 LED Dual Colors	D = ●○ E = ●○ F = ●○ J = ●●
12 or 18 LED Tricolors	RBA = ●●● RBW = ●●○

●●●○ To order configured products, contact your sales representative or customer service department.

Features

- Single, dual or tricolor capabilities
- Ability to integrate visually into today's police vehicles
- Collaboration with Dow Corning® to develop ClearDuty® optical design
- ClearDuty® silicone molded one-piece housing and optic design delivers advantages over conventional polycarbonate lenses
 - A smaller footprint with maximized candela output
 - Greater resistance to gravel pitting, scratching or cracking
 - Improved sealing to prevent water from entering light
 - Higher UV and thermal stability to prevent lens from yellowing over time
- Universal rock bracket kit is available (stud mount and HD only)
- Compatible with the ConfigureIT system for easy light programming (does not include spot and flood lights)
- Steady-burn with dim function (spot and flood lights only)

INPUT VOLTAGE RANGE	9-32 Vdc		
CURRENT DRAW	<1.0 Amp @ 12.8 Vdc, <0.5 Amp @ 25.6 Vdc		
LIGHT SYNC	24 single sync 2 lightheads		
FLASH PATTERNS	12 Single, 14 Dual or 14 Tricolor patterns (does not include spot and flood lights)		
OPERATING TEMPERATURE	-40° C to +65° C		
DIMENSIONS	3 Inch Stud	4 Inch Stud	HD
Length	3.04" (7.72 cm)	4.04" (10.3 cm)	4.25" (10.8 cm)
Height	0.92" (2.3 cm)	0.92" (2.3 cm)	0.92" (2.3 cm)
Depth	0.42" (1 cm) (from mounting surface)	0.42" (1 cm) (from mounting surface)	6" (1.5 cm) (from mounting surface)
	3 Inch Quick	4 Inch Quick	
Length	3.04" (7.72 cm)	4.04" (10.3 cm)	
Height	0.92" (2.3 cm)	0.92" (2.3 cm)	
Depth	0.47" (1.2 cm) (from mounting surface)	0.47" (1.2 cm) (from mounting surface)	
	3 Inch Screw	4 Inch Screw	
Length	3.52" (8.94 cm)	4.52" (11.4 cm)	
Height	0.92" (2.3 cm)	0.92" (2.3 cm)	
Depth	0.42" (1 cm) (from mounting surface)	0.42" (1 cm) (from mounting surface)	
CERTIFICATIONS	SAE J595 Class 1 certified SAE J845 Class 1 certified CA Title 13, Article 22 compliant EMC R10.05 (HD light only)		
WARRANTY	Five-year		

ACCESSORIES

Refer to the following pages. Lights sold separately.

Lights and replacement modules sold separately.

BRACKETS

License Plate, Stud Mount	Vertical mount, three inch	PMP1BRK2LPV
	Vertical mount, four inch	PMP2BRK2LPV

BRACKET KITS

Rear Spoiler, Stud Mounts

Chevy	Tahoe, 2015-2020	
	Three lights per passenger and driver side	PMP2RSBTH3
	Four lights per passenger and driver side	PMP2RSBTH4
Ford	PI Utility, 2015-2019	
	One light per driver and passenger side, four inch	PMP2RSBUV1
	Two lights per driver and passenger side, four inch	PMP2RSBUV2
	Three lights per driver and passenger side, four inch	PMP2RSBUV3
	Four lights per driver and passenger side, four inch	PMP2RSBUV4
	PI Utility, 2020	
	One light per driver and passenger side, four inch	PMP2RS101
	Two lights per driver and passenger side, four inch	PMP2RS201
	Three lights per driver and passenger side, four inch	PMP2RS301
	Four lights per driver and passenger side, four inch	PMP2RS401

Rock Mount, Universal	Stud mount and HD light, four inch (includes mounting hardware)	PMP4BKRRKB
-----------------------	---	------------

Under Mirror Mounts

Chevy	Silverado, 2018 and 2019	
	Stud and quick mount, three inch	PMP1BKUMB2
	Tahoe, 2016-2019	
	Stud and quick mount, three inch	PMP1BKUMB3
GMC	Stud and quick mount, driver side, three and four inch	PNT3BKUMB3-D
	Stud and quick mount, passenger side, three and four inch	PNT3BKUMB3-P
	Sierra, 2018 and 2019	
	Stud and quick mount, three inch	PMP1BKUMB2
Dodge	Durango, 2016-2019	
	Stud and quick mount, three and four inch	PNT3BKUMB4
	Dodge Durango, 2018 and 2019	
	Stud and quick mount, three inch	PMP1BKUMB1
Ford	Ram, 2014-2018	
	Stud and quick mount, driver side, three and four inch	PNT3BKUMB2-D
	Stud and quick mount, passenger side, three and four inch	PNT3BKUMB2-P
	Not compatible with towing mirrors.	
	Expedition, 2018 and 2019	
	Stud and quick mount, three inch	PMP1BKUMB1
	F-150, 2015-2018	
	Stud and quick mount, driver side, three and four inch	PMP2BKUMB2-D
	Stud and quick mount, passenger side, three and four inch	PMP2BKUMB2-P
	PI Utility, 2016-2019	
	Stud and quick mount, three inch	PMP1BKUMB1
	Stud and quick mount, four inch	PMP2BKUMB1

mpower ACCESSORIES

Lights and replacement modules sold separately.

FRAMES

License Plate	4 inch, quick mount light	PMP2BRK2LPF
---------------	---------------------------	-------------

WEDGES

Quick Mounts

Three Inch

Black, 5 degrees	PMP1WDG05B
Black, 15 degrees	PMP1WDG15B
Black, 35 degrees	PMP1WDG35B
White, 5 degrees	PMP1WDG05W
White, 15 degrees	PMP1WDG15W
White, 35 degrees	PMP1WDG35W

Four Inch

Black, 5 degrees	PMP2WDG05B
Black, 15 degrees	PMP2WDG15B
Black, 35 degrees	PMP2WDG35B
White, 5 degrees	PMP2WDG05W
White, 15 degrees	PMP2WDG15W
White, 30 degrees	PMP2WDG35W

Includes wedge and 3M VHB adhesive

WINDSHIELD SHROUDS

Adjustable 25 to 90 Degrees

Single

Three inch, black	PMP1WSSSB
Three inch, white	PMP1WSSSW
Four inch, black	PMP2WSSSB
Four inch, white	PMP2WSSSW

Dual

3 inch, black	PMP1WSDDB
3 inch, white	PMP1WSDDW
4 inch, black	PMP2WSDDB
4 inch, white	PMP2WSDDW

FASCIA MOUNTING OPTIONS

Quick Clip Mount

Quick Clip Bracket

3 inch, black	PMP1BKQCLP
4 inch, black	PMP2BKQCLP

Stud Mount

90 Degree Adjustable Mount Bracket

3 inch, black	PMP1BKDGAJ
3 inch, white	PMP1BKDGAJ-W
4 inch, black	PMP2BKDGAJ
4 inch, white	PMP2BKDGAJ-W

Stud Mount

90 Degree Adjustable Edge Mount Bracket

3 inch, black	PMP1BKEDGE
3 inch, white	PMP1BKEDGE-W
4 inch, black	PMP2BKEDGE
4 inch, white	PMP2BKEDGE-W

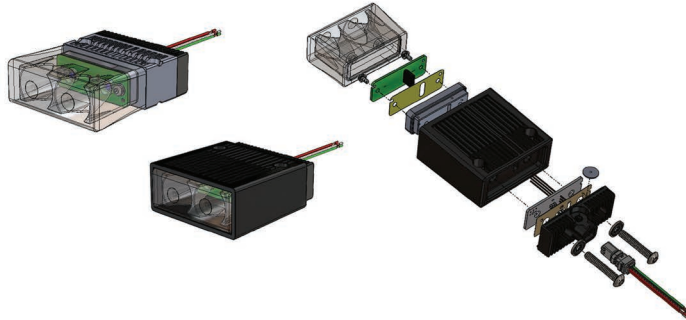


Perimeter White Lights

Coming Soon!

2x1 Inch, Silicone

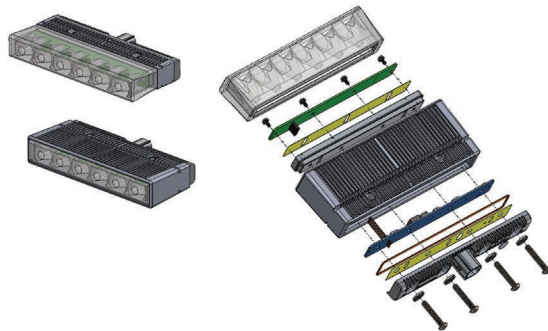
White LEDs



LUMENS PER LAMP	1440
PEAK BEAM INTENSITY (CD)	23,000
LEDS PER LAMP	2
WATTS PER LAMP	15.5 W
5 DEGREE SPOT	
COLOR	Black
IP	IPX7

6x1 Inch, Silicone

White LEDs



LUMENS PER LAMP	4320
PEAK BEAM INTENSITY (CD)	69,000
LEDS PER LAMP	6
WATTS PER LAMP	45 W
5 DEGREE SPOT	
COLOR	Black
IP	IPX7

Features

- Industry-first optical grade silicone high power spot lens
- A smaller footprint with maximized candela output
- Greater resistance to gravel pitting, scratching or cracking
- Improved sealing to prevent water from entering light
- Higher UV and thermal stability to prevent lens from yellowing over time
- Won't crack in harsh environments

Contact your sales representative for additional information.

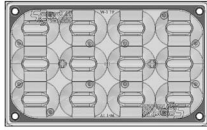
Fire/EMS Lights

Warning, Stop/Tail/Turn and Reverse Functionality Available

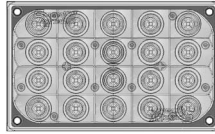
Coming Soon!

6x4 Inch Silicone and Polycarb Lens

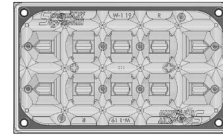
Warning



Stop/Tail/Turn

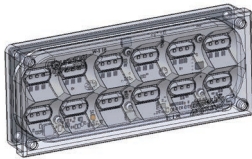


Reverse

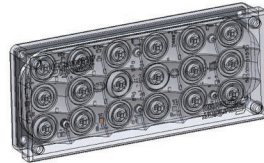


7x3 Inch Silicone and Polycarb Lens

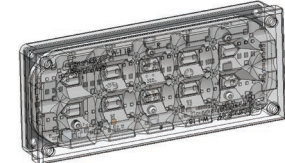
Warning



Stop/Tail/Turn



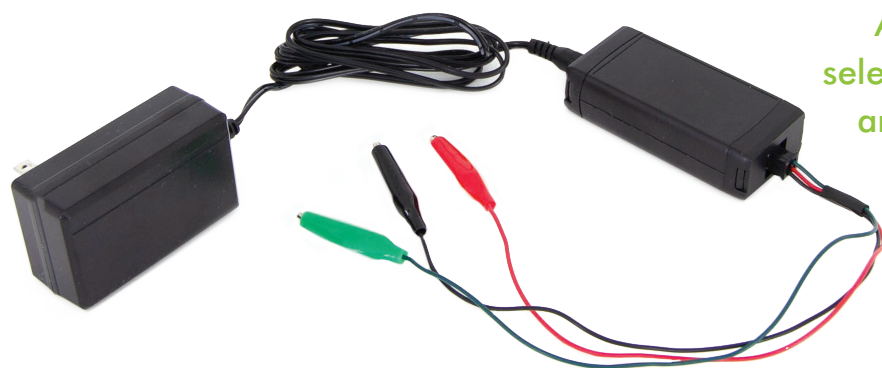
Reverse



7x3 Inch Warning Light

Contact your sales representative for additional information.

ConfigureIT App



Allows you to configure
select 5-wire lights via an app
and Bluetooth connection

Features

- Reduces Install time
- Eliminates tapping of wires
- App available in Apple Store and Google Play
- Save configurations for repetitive lights for multiple / reused configurations
- Simple User Interface – no training required
- Supported by world-class technical support

Bluetooth module, power plug and alligator clips **ECTBM001**

App is available for free via your preferred app store

ConfigureIT Bluetooth Module Directions for Use

1. Download the “SoundOff Signal” app on your handheld device. App is available via Google Play and the App Store.



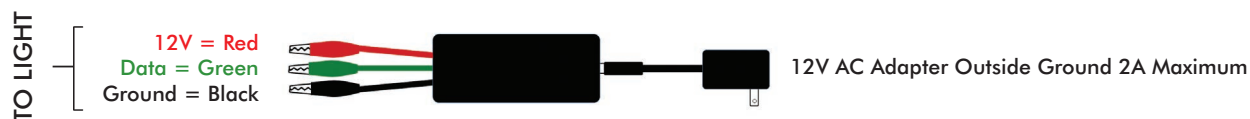
2. Connect your perimeter light to the ConfigureIT Bluetooth module. See connection diagrams below.
3. Scan and connect via the ConfigureIT app.
4. Begin configuring your light.



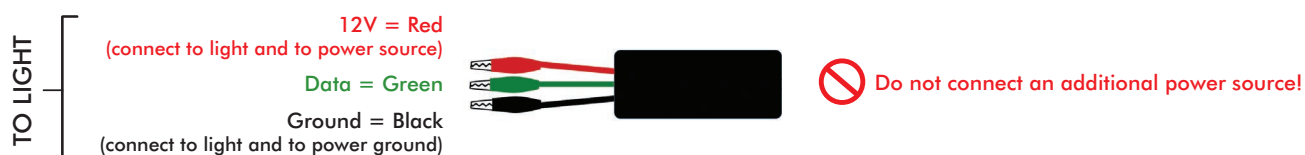
For a video of how to use the ConfigureIT System,
use the QR code on the left or visit: soundoffsignal.com/products/configureIT-system

ConfigureIT Bluetooth Module Connections

OPTION 1: Light Powered Through Bluetooth Module



OPTION 2: Bluetooth Module Powered with Light





Surface, Deck/Grille and Recess Mount Lights

Surface Mounts



Single Mount

6 LED, Single or Split Colors
9 LED, Single Color
9 LED, Single Color, Amber, High Output
9 LED, Single Color, 10-30 Vdc, Xylex Lens
12 LED, Single or Dual Colors
18 LED, Tricolor

ENFSSS1(x)
ENFSSS2(x)
ENFSSS2A-PC
ENFSSE2(x)
ENFSSS3(x)
ENFSSS4(xxx)



Dual Stacked Mount

6 LED, Single or Split Colors
9 LED, Single Color
9 LED, Single Color, Amber/Amber, High Output
9 LED, Single Color, 10-30 Vdc, Xylex Lens
12 LED, Single or Dual Colors
18 LED, Tricolor

ENFDSS1(xx)
ENFDSS2(xx)
ENFDSS2AA-PC
ENFDSE2(xx)
ENFDSS3(xx)
ENFDSS4(xxx)

Deck/Grille Mounts



Single Mount

6 LED, Single or Split Colors
9 LED, Single Color
9 LED, Single Color, Amber, High Output
9 LED, Single Color, 10-30 Vdc, Xylex Lens
12 LED, Single or Dual Colors
18 LED, Tricolor

ENFSGS1(x)
ENFSGS2(x)
ENFSGS2A-PC
ENFSGE2(x)
ENFSGS3(x)
ENFSGS4(xxx)



Dual Side-by-Side Mount

6 LED, Single or Split Colors
9 LED, Single Color
9 LED, Single Color, Amber/Amber, High Output
9 LED, Single Color, 10-30 Vdc, Xylex Lens
12 LED, Single or Dual Colors
18 LED, Tricolor

ENFDGS1(xx)
ENFDGS2(xx)
ENFDGS2AA-PC
ENFDGS2AA-PC
ENFDGS3(xx)
ENFDGS4(xxx)

Recess Mount



Recess Mount

6 LED, Single or Split Colors
9 LED, Single Color
9 LED, Single Color, 10-30 Vdc, Xylex Lens
12 LED, Single or Dual Colors
18 LED, Tricolor

ENFSRS1(x)
ENFSRS2(x)
ENFSRE2(x)
ENFSRS3(x)
ENFSRS4(xxx)



Six Inch Oval Recess Mount

6 LED, Single or Split Colors
9 LED, Single Color
9 LED, Single Color, Amber, High Output
12 LED, Single or Dual Colors

ENFSRV1(x)
ENFSRV2(x)
ENFSRV2A-PC
ENFSRV3(x)



Windshield Mount Lights

Windshield Mounts



Single, Stacked Mount

Includes shroud, bracket and bare wires

6 LED, Single or Dual Colors	ENFSWP1(x)
9 LED, Single Color	ENFSWP2(x)
9 LED, Single Color, Amber, High Output	ENFSWP2A-PC
12 LED, Single or Dual Colors	ENFSWP3(x)
18 LED, Tricolor	ENFSWP4(xxx)

Single, Suction Cup Mount

Includes shroud, bracket and 12 volt cig plug with 11.5' cord

6 LED, Single or Split Colors	ENFSWS1(x)
9 LED, Single Color	ENFSWS2(x)
9 LED, Single Color, Amber, High Output	ENFSWS2A-PC
12 LED, Single or Dual Colors	ENFSWS3(x)
18 LED, Tricolor	ENFSWS4(xxx)



Dual Side-by-Side, Permanent Mount

Includes shroud, bracket and bare wires

6 LED, Single or Dual Colors	ENFDWP1(xx)
9 LED, Single Color	ENFDWP2(xx)
9 LED, Single Color, Amber/Amber, High Output	ENFDWP2AA-PC
12 LED, Single or Dual Colors	ENFDWP3(xx)
18 LED, Tricolor	ENFDWP4(xxx)

Dual Side-by-Side, Suction Cup Mount

Includes shroud, bracket and 12 volt cig plug with 11.5' cord

6 LED, Single or Dual Colors	ENFDWS1(xx)
9 LED, Single Color	ENFDWS2(xx)
9 LED, Single Color, Amber/Amber, High Output	ENDWS2AA-PC
12 LED, Single or Dual Colors	ENDWS3(xx)
18 LED, Tricolor	ENFDWS4(xxx)

Features

Surface, Deck/Grille, Recess, Six Inch Oval Recess and Windshield Mounts

- Single, split, dual or tricolor capability (tricolor is not available for the six inch oval recess mount)
- 6, 9, 12 or 18 LED counts (18 LED count is not available for the six inch oval recess mount)
- Steady-burn white capability
- ECE R65 certified (surface, deck/grille and recess mounts only)
- Secondary function can be either flashig or steady-burn (six inch oval recess mount only)

nFORCE Surface, Deck/Grille, Recess and Windshield Mount Lights

Surface, Deck/Grille, Recess, Six Inch Oval Recess and Windshield Mounts

Replace (x), (xx) or (xxx) in the Order Number for Standard Color Selection			
6, 9 or 12 LED Single Colors	A = ● B = ● R = ● W = ○	Six Inch Oval Recess Mount: A = ● W = ○	
6 LED Split Color	J = ●●	Six Inch Oval Recess Mount: D = ●○ F = ●○	
12 LED Dual Colors	D = ●○ E = ●○ F = ●○ J = ●●	Six Inch Oval Recess Mount: D = ●○ F = ●○	
18 LED Tricolors	BRA = ●●● BRW = ●●○	Six Inch Oval Recess Mount: Not available	

● ● ● ● ○ To order configured products, contact your sales representative or customer service department.

INPUT VOLTAGE RANGE	10-16 Vdc standard or 10-30 Vdc (configurable option)		
CURRENT DRAW PER MODULE	10-16 VDC	10-30 VDC (configurable option)	
6 LED Single Color	<1.0 Amp @ 12.8 Vdc	<0.6 Amp @ 25.6 Vdc	
6 LED Split Color	<1.0 Amp @ 12.8 Vdc	<0.6 Amp @ 25.6 Vdc	
9 LED Single Color	<1.5 Amp @ 12.8 Vdc	<0.9 Amp @ 25.6 Vdc	
12 LED Single Color	<2.0 Amp @ 12.8 Vdc	<1.2 Amp @ 25.6 Vdc	
12 LED Dual Color	<1.0 Amp @ 12.8 Vdc	<0.6 Amp @ 25.6 Vdc	
18 LED Tricolor	<1.0 Amp @ 12.8 Vdc	<0.6 Amp @ 25.6 Vdc (tricolor is not available for the six inch oval recess mount)	
LIGHT SYNC	24 single sync 2 lighthead		
FLASH PATTERNS	12 single, 14 dual or 14 tricolor patterns (tricolor is not available for the six inch oval recess mount)		
OPERATING TEMPERATURE	-40° C to +65° C / -40° F to +149° F		
DIMENSIONS			
Surface Mount, Single		Recess Mount	
Length	5.0" (12.7 cm)	Length	5.25" (13.34 cm)
Height	1.72" (4.3 cm)	Height	2.25" (5.72 cm)
Depth	1.50" (3.8 cm)	Depth	1.50" (3.8 cm)
Surface Mount, Dual Stacked		Windshield Mount, Single	
Length	5.0" (12.7 cm)	Length	6.80" (17.27cm)
Height	3.13" (7.9 cm)	Height	1.43" (3.6 cm)
Depth	1.5" (3.8 cm)	Depth	1.43" (3.6 cm)
Deck/Grille Mount, Single		Windshield Mount, Dual Side-by-Side	
Length	5.0" (12.7 cm)	Length	11.35" (28.8 cm)
Height	1.88" (4.7 cm)	Height	1.43" (3.6 cm)
Depth	1.82 (4.3 cm)	Depth	5" (12.7 cm)
Deck/Grille Mount, Dual Side-by-Side			
Length	9.50" (24.1 cm)		
Height	1.88" (4.7 cm)		
Depth	1.82" (4.3 cm)		
CERTIFICATIONS	SAE J595, Class 1 certified and CA Title 13, Article 22 compliant EMC 72/245/EEC certified and ECE R65 Category X, Class 2 certified (ECE R65 can only be specified with 9 LED single color) (surface, deck/grille and recess mounts only)		
WINDSHIELD MOUNT	SAE J595, Class 1 certified (not amber) and CA Title 13, Article 22 compliant EMC 72/245/EEC certified		
WARRANTY	Five-year		

ACCESSORIES

Refer to following page. Lights sold separately.



Surface and Deck/Grille Mount Lights

Lights and replacement modules sold separately.

BRACKETS			
License Plate, Surface Mount		Horizontal mount	PNFSLBRK2LPH
		Vertical mount	PNFSLBRK2LPV
Rear Spoiler, Surface Mounts			
Chevy	Tahoe, 2015-2017		
	Rear spoiler, single		PNFSLRSBUVS
Ford	PI Utility, 2011-2017		
	Dual, driver side		PNFSLRSBUVD
	Dual, passenger side		PNFSLRSBUVP
	PI Utility, 2011-2017		
	Dual, passenger/driver sides		PNFSLRSBTH
45 Degree Angle, Surface Mount			
Ford	PI Utility, 2011-2017		
	Horizontal mount		PNFSLBRK145
90 Degree Angle, Surface Mounts			
	Horizontal mount		PNFSLBRK190
Chevy	Tahoe, 2015-2017		
	Behind grille, passenger/driver sides		PNFSLDGSB-TH
Deck/Grille Mount			
	Single		PNFSLDGSB
	Dual		PNFSLDGDB
FOG LIGHT KIT			
Surface Mount			
Chevy	Tahoe, 2015-2017		
	Pssenger/driver fog light bezels, mounting plates and hardware		PNFSLFLKTH

Bolt 2 Surface Mount Light



9 LED, Single Colors
 18 LED, Dual Colors
 18 LED, Dual Color, Red/Blue,
 ECE R65 Category X Class 2 and ECE R10 Certified
 18 LED, Dual Color, Blue/Amber,
 ECE R65 Category X Class 2 and ECE R10 Certified

E1XS2SME5(x)X
 E1XS2SME5(xx)
 DE2-E1XS2SMF5RB

DE2-E1XS2SMF5BA

Replace (x) or (xx) in the Order Number for Standard Color Selection

9 LED Single Colors A = ● B = ● G = ● R = ● W = ○

18 LED Dual Colors AW = ●○ BA = ●● BW = ●○ GA = ●● RA = ●● RB = ●● RW = ●○

Feature

- Bright, high-performing light in compact, versatile design

INPUT VOLTAGE	10-30 Vdc
CURRENT DRAW @ 12.8 VDC	1.1 Amps
FLASH PATTERNS	8
OPERATING TEMPERATURE	-40° C to +65° C
LED COUNT	Single color, 9 LEDs or dual colors, 18 LEDs
DIMENSIONS	Length 5.5" (140 mm) (14 cm) Height 1.6" (41 mm) (4.1 cm) Depth 0.48" (12.2 mm) (1.22 cm)
CERTIFICATIONS	SAE J845 Class 1 certified (amber, blue, red and white) and CA title 13 Table 1 Class B certified (amber, blue, red and white) ECE R65 Category X Class 2 and ECE R10 certified (amber, blue and red)
WARRANTY	Three-year

Fusion Lite Surface Mount Light



Solid Colors EFL1B0(x)
 Dual Color, Red/Blue EFL2B0J
 Dual Color, Amber/White EFL2B0F

Replace (x) in the Order Number for Standard Color Selection

Solid Colors A = ● B = ● R = ● W = ○

Feature

- Fusion II technology - optic for a bright, extra wide output

INPUT VOLTAGE	10-30 Vdc
CURRENT DRAW	<.5 Amp @ 12.8 Vdc, <0.75 Amp @ 25.6 Vdc
LIGHT SYNC	6 single fusion lighthoods
FLASH PATTERNS	6 flash patterns
LED COUNT	Solid colors, 1 LED or dual colors, 2 LEDs
OPERATING TEMPERATURE	-20° C to +65° C
DIMENSIONS	Length 3.2" (8 cm) Height .8" (2 cm) Depth 1.7" (4.2 cm)
CERTIFICATIONS	RoHS, WEEE compliant and meets SAE J845 Class 3 requirements
WARRANTY	Five-year



Under Mirror and Surface Mount Lights

Under Mirror Mount



8 LED, Single Color	ENT2B3(x)
8 LED, Single Color, Xylex Lens	ENT2B3(x)-EU
16 LED, Dual Color	ENT2B3(y)
16 LED, Dual Color, Xylex Lens	ENT2B3(y)-EU
18 LED, Tricolor	ENT2B3(xxx)

Under Mirror Mount



8 LED, Single Color, Black Housing	ENT3B3(x)
8 LED, Single Color, Chrome Housing	ENT3C3(x)
8 LED, Single Color, White Housing	ENT3W3(x)
16 LED, Dual Color, Black Housing	ENT3B3(y)
16 LED, Dual Color, Chrome Housing	ENT3C3(y)
16 LED, Dual Color, White Housing	ENT3W3(y)
18 LED, Tricolor, Black Housing	ENT3B3(xxx)
18 LED, Tricolor, Chrome Housing	ENT3C3(xxx)
18 LED, Tricolor, White Housing	ENT3W3(xxx)

Replace (x), (y) or (xxx) in the Order Number for Standard Color Selection

8 LED Single Colors (x)	A = ● B = ● G = ● R = ● W = ○
16 LED Dual Colors (y)	D = ●○ E = ●○ F = ●○ J = ●● K = ●● L = ●● M = ●● N = ●● P = ●●
18 LED Tricolors (xxx)	BAG = ●●● BAW = ●●○ BGW = ●●○ GAW = ●●○ RAG = ●●● RAW = ●●○ RBA = ●●● RBW = ●●○ RBG = ●●● RGW = ●●○

Features: Under Mirror Mount

- Light includes 0, 5, 10 and 15 degree mounting wedges and foam gasket
- The first light of its kind to offer critical intersection warning and side warning
- Light is based upon problem solving research - 30% of all emergency vehicle crashes are likely to occur at dangerous intersections
- Unique under-mirror mount simplifies installation - labor saving light is much easier to install than traditional front mirror skull mounts - no mirrors to work behind or around
- Light can be surface mounted to any flat area on any type of vehicle - elevate your safety and visibility by mounting to the headache rack or body of the vehicle wherever additional lighting is needed
- Features cruise mode for steady burn if desired
- Steady-burn white can be specified as a means of providing additional side/alley lighting

Features: Surface Mount

- No other light offers 180 degree output - specially designed reflector amplifies and throws the light at the perfect angle to increase visibility at intersections
- Includes surface mount light in your choice of LED and housing colors, neoprene gasket and mounting hardware for installation
- Patented design, the first light of its kind to offer critical intersection warning and side warning illumination now available with surface mount capabilities

INPUT VOLTAGE	9-32 Vdc
CURRENT DRAW	8 LED Single Color, <1.3 Amp @ 12.8 Vdc, <0.65 Amp @ 25.6 Vdc 16 LED Dual Color, <1.3 Amp @ 12.8 Vdc, <0.65 Amp @ 25.6 Vdc 18 LED Tricolor, <1.0 Amp @ 12.8 Vdc, <0.5 Amp @ 25.6 Vdc
LIGHT SYNC	24 single sync 2 lighthead
FLASH PATTERNS	12 single, 14 dual or 14 tricolor
OPERATING TEMPERATURE	-40° C to +65° C / -40° F to +149° F
DIMENSIONS	
Length	2.9" (7.4 cm)
Height	1.9" (4.8 cm)
Depth	2.9" (7.4 cm)
MOUNTING	Under mirror or surface mount
CERTIFICATIONS	SAE J845 Class 1 WS3-1 (100) certified (green is class 3 certified) ECE R10.05 certified
WARRANTY	Five-year

ACCESSORIES

Lights sold separately.

BRACKETS

Surface Mounts	Chevrolet Tahoe	PNT3DGBB-TH
	Deck/Grille mount	PNT3DGBB
Under Mirror Installation Mount	Bracket and screws	PNT1WRRT

BRACKET KITS

Under Mirror Mounts		
Chevy	Tahoe, 2016-2019	
	Surface mount, driver	PNT3BKUMB3-D
	Surface mount, passenger	PNT3BKUMB3-P
Dodge	Durango, 2016-2019	PNT3BKUMB4
Ford	PI Utility, 2016-2019	PMP2BKUMB1

SURFACE ADAPTORS

Under Mirror, Curved		
Chevrolet	Sold in pairs.	
	Universal	PNT1CRV01
	Caprice, 2011- 2017	PNT1CRV02
Dodge	Charger, 2011- 2017	PNT1CRV03
	Durango, 2013- 2017	PNT1CRV06
Ford	Explorer, 2013- 2017	PNT1CRV05
	Sedan, 2013- 2017	PNT1CRV04



Surface, Deck/Grille and Recess Mount Lights

Surface Mounts



Single Mount

Black Housing, 10-16 Vdc	EGHST2(x)-12
Chrome Housing, 10-16 Vdc	EGHST2(x)C-12
White Housing, 10-16 Vdc	EGHST2(xW)-12
Black Housing, 10-30 Vdc	EGHST2(x)
Chrome Housing, 10-30 Vdc	EGHST2(x)C
White Housing, 10-30 Vdc	EGHST2(x)W
Black Housing, 10-16 Vdc, ECE R65 Certified, Xylex Lens	EGHSTE2(x)B-EU
Chrome Housing, 10-16 Vdc, ECE R65 Certified, Xylex Lens	EGHSTE2(x)C-EU
White Housing, 10-16 Vdc, ECE R65 Certified, Xylex Lens	EGHSTE2(x)W-EU
Black Housing, 10-30 Vdc, ECE R65/EMC Certified	EGHSTE2(x)B
Chrome Housing, 10-30 Vdc, ECE R65/EMC Certified	EGHSTE2(x)C
White Housing, 10-30 Vdc, ECE R65/EMC Certified	EGHSTE2(x)W

Amber, blue or red LED solid color options only on certified lights



Single Stop/Tail Mount

Black Housing, 10-30 Vdc	EGHSTT2(x)B
Black Housing, 10-30 Vdc	EGHSTT2(x)B
Chrome Housing, 10-30 Vdc	EGHSTT2(x)C
White Housing, 10-30 Vdc	EGHSTT2(x)W
White Housing, 10-30 Vdc	EGHSTT2(x)W



Single Spot Mount

Black Housing, 10-30 Vdc	EGHSTS2W
Chrome Housing, 10-30 Vdc	EGHSTS2WC
White Housing, 10-30 Vdc	EGHSTS2WW

White LED, solid color

Deck/Grille Mounts



Single Multi-Mount

Black Housing, 10-16 Vdc	EGHST1(x)-12
White Housing, 10-16 Vdc	EGHST1(x)W-12
Black Housing, 10-30 Vdc	EGHST1(x)
White Housing, 10-30 Vdc	EGHST1(x)W
Black Housing, 10-16 Vdc, ECE 65/EMC Certified	EGHSTE1(x)B
White Housing, 10-16 Vdc, ECE 65/EMC Certified	EGHSTE1(x)W
Black Housing, Xylex Lens	EGHSTE1(x)B-EU
White Housing, Xylex Lens	EGHSTE1(x)W-EU

Amber, blue or red LED solid color options only on xylex lens lights

Single Stop/Tail Multi Mount

Black Housing, 10-16 Vdc	EGHSTTR
White Housing, 10-16 Vdc	EGHSTTRW

Red LED, solid color

Single Spot Mount

Black Housing, 10-30 Vdc	EGHSTS1W
White Housing, 10-30 Vdc	EGHSTS1WW

White LED, solid color

GHOST Recess Mount Lights

Recess Mounts



Single Mount

Black Housing, 10-16 Vdc
 Chrome Housing, 10-16 Vdc
 Black Housing, 10-30 Vdc
 Chrome Housing, 10-30 Vdc
 Black Housing, 10-30 Vdc, ECE R65/EMC Certified, Xylex Lens
 Chrome Housing, 10-30 Vdc, ECE R65/EMC Certified, Xylex Lens
 Black Housing, 10-30 Vdc, ECE R65/EMC Certified
 Chrome Housing, 10-30 Vdc, ECE R65/EMC Certified

Amber, blue or red LED solid color options only on certified lights

EGHST5(x)B-12
 EGHST5(x)C-12
 EGHST5(x)B
 EGHST5(x)C
 EGHSTE5(x)B-EU
 EGHSTE5(x)C-EU
 EGHSTE5(x)B
 EGHSTE5(x)C

Single Stop/Tail Mount

Black Housing, 10-30 Vdc EGHSTT5(x)B
 Chrome Housing, 10-30 Vdc EGHSTT5(x)C

Single Spot Mount

Black Housing, 10-30 Vdc EGHSTS2WB
 Chrome Housing, 10-30 Vdc EGHSTS2WC
 White LED, solid color

Replace (x) in the Order Number for Standard Color Selection

Solid Colors	A = ●	B = ●	G = ●	R = ●	W = ○								
Split Colors	A = ●	B = ●	G = ●	R = ●	W = ○	D = ●○	E = ●○	F = ●○	J = ●●	K = ●●	L = ●●	M = ●●	N = ●●
		P = ●●											

Features

- Fits almost anywhere with premium optics offer optimal power and brightness
- Premium optics offer optimal power and brightness

INPUT VOLTAGE	10-16 Vdc or 10-30 Vdc
CURRENT DRAW	<0.75 Amp (flash pattern dependent)
LIGHT SYNC	4 single sync, 1 lighthouse
FLASH PATTERNS	33 flash patterns
LED COUNT	6 LEDs
OPERATING TEMPERATURE	-40° C to +65° C / -40° F to +149° F
DIMENSIONS	Single Multi, Single Stop Tail Multi, Single Spot or Rock Length: 5.7" (14 cm) Height: 1.06" (2.7 cm) Depth: 1.8" (4.6 cm) Length: 5.4" (14 cm) Height: 2.4" (6.1 cm) Depth: 1" (2.5 cm)
MOUNTING	Multi: Includes three mounting options; permanent, single edge and 3M adhesive mounts 4" (10 cm) L x 0.9" (2.3 cm) H x 1.8" (4.6 cm) D Rock: 4.8" (12 cm) L x 2" (5.1 cm) H x 1.6" (4.1 cm) D Stop/Tail Multi: Includes two mounting options; permanent and 3M adhesive mounts
CERTIFICATIONS	SAE J595 Class 1 certified CA Title 13, Article 22 compliant EMC certified, 72/245/EEC ECE 65, Category X, Class 1 certified
WARRANTY	Five-year

ACCESSORIES

Refer to following page.

GHOST Surface and Deck/Grille Mount ACCESSORIES

Lights and replacement modules sold separately.

BRACKETS

Single Surface Mount

Chevy

Tahoe, 2015

Behind the grille installation, driver and passenger side

PNFSLDGSB-TH

Vertical license plate installation

PNFSLBRK2LPV

Single Deck/Grille Mount Bracket

Chevy

Tahoe, 2015

Front deck/grille, driver and passenger side

PGHSTDGSB-TH

BRACKET KIT

Universal Rock Mount

Deck/Grille (includes mounting hardware)

PMP4BKRLB

Can also be used with the mpower® four inch stud mount and HD light

ML6 Flush Mount Light



Single Colors

EML6E20(x)

Dual Colors

EML6E20(xx)

Replace (x) or (xx) in the Order Number for Standard Color Selection

Single Colors

A = ● B = ● R = ● W = ○

Dual Colors

AW = ●○ BA = ●● BW = ●○ GA = ●● RA = ●● RB = ●● RW = ●○

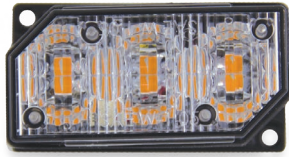
Features

- Compact, flush-mount emergency light to fit seamlessly into any vehicle design
- Features bright warning lights in both single and dual colors

INPUT VOLTAGE	10-30 Vdc
CURRENT DRAW	1 Amp max @ 12.8 Vdc
LIGHT SYNC	ML6 lights
FLASH PATTERNS	Single: 19 or Dual: 14
OPERATING TEMPERATURE	-30° C to +50° C
DIMENSIONS	
Height	1.38" (3.5 cm)
Width	1.38" (3.5 cm)
Depth	1.18" (2.99 cm)
CERTIFICATIONS	SAE J595, Class 1 certified (single colors) and SAE J595, Class 2 certified (dual colors) ECE R65, Class 1, ECE R10.05 certified (amber, blue and red single colors), ECE R10.05 certified (white, single color) and ECE R10.05 certified (dual colors)
WARRANTY	Three-year

LED3plus

Mini Surface Mount Light



Solid Colors
Amber or Blue, ECE R10.05 and ECE 65 Certified
Solid Colors, ECE R10.05 Certified

EL3PSN(x)
EL3SN30(x)-EC
EL3PSN(x)EC

Replace (x) in the Order Number for Standard Color Selection

Solid Colors A = ● B = ● G = ● R = ● W = ○

Features

- High powered, versatile mini surface mount with versatile mounting options, optional brackets and bezels for any vehicle and any mount
- Includes rubber mounting gasket and mounting hardware with 12 inches of 3-wire cable for hard wire installation

INPUT VOLTAGE	10-16 Vdc
CURRENT DRAW	<0.5 Amp @ 12.8 Vdc, <0.25 Amp @ 25.6 Vdc
LIGHT SYNC	4 single sync, 1 lighthouse
FLASH PATTERNS	33 flash patterns
LED COUNT	6 LEDs
OPERATING TEMPERATURE	-40° C to +65° C / -40° F to +149° F
DIMENSIONS	Length 2.5" (6.4 cm) Height 1.4" (3.6 cm) Depth 1.25" (3.2 cm)
MOUNTING	2.21" (5.6 cm) centers
CERTIFICATIONS	SAE J595 Class 1 certified and Article 22, CA Title 13 compliant (blue and red = 1 light and amber = 2 lights) ECE R10.05 and ECE 65 certified (refer to above part numbers)
WARRANTY	Five-year

ACCESSORIES

Lights and replacement modules sold separately.

BEZELS

Ford	PI Utility, 2011-2014	PEL3FLBKFSU
	Four inch round	
	Dual Stacked	PEL3BZDS(x)
	Dual Side-by-Side	PEL3BZSS(x)
	Replace (x) in order number for housing color selection: B=Black C=Chrome W=White	

BRACKETS

Surface Mounts	Universal grille	EL3SNBRK1GRU
	45 degrees, vertical	EL3SNBRK145
	90 degrees	EL3SNBRK190
	Side-by-side, 90 degrees	EL3SNBRK29ØH
	Stacked 90 degrees, horizontal	EL3SNBRK290V
	Stacked 90 degrees, vertical	EL3SNBRK290V
License Plate, Surface Mounts	Horizontal	EL3SNBRK2LPH
	Vertical	EL3SNBRK2LPV

KIT

Fog Light, Ford	PI Utility, 2013 and newer (includes bracket and mounting hardware)	PEL3FLBKFSU
-----------------	--	-------------

Universal UnderCover LED Insert



10 feet cable length

ELUC3H010(x)

25 feet cable length

ELUC3H025(x)

Replace (x) in the Order Number for Standard Color Selection

Solid Colors A = ● B = ● G = ● R = ● W = ○

Dual Colors D = ●○ E = ●○ F = ●○ H = ●○ J = ●● K = ●● L = ●● M = ●● N = ●● P = ●●

Features

- Features separate color control capability
- Secondary function can be flashing or steady burn
- Includes extreme angle lens, inline flasher and cable for hardwire installation
- Use with optional bezels to surface mount to any flat area on the vehicle body for additional lighting anywhere
- Compatible with the ConfigureIT system for easy light programming

INPUT VOLTAGE	9-32 Vdc
CURRENT DRAW	<.65 Amp (flash pattern dependent) @ 12.8 Vdc, <0.33 Amp @ 25.6 Vdc
LIGHT SYNC	24 single, sync 2 lighthead
FLASH PATTERNS	12 single color or 14 dual color
LED COUNT	6 LEDs
OPERATING TEMPERATURE	-40° C to +65° C
DIMENSIONS	
Insert	Height .9" (2.3 cm) Diameter 1.5" (3.8 cm)
Bezel	Height 1.65" (4.2 cm) Diameter .63" (1.6 cm) Length 2.2" (5.6 cm)
MOUNTING	Headlight and taillight mounts into 1" diameter cutout Screw-in surface mount with optional bezel Bezel mounts on 1.89" (4.8 cm) centers Twist-in or push-in options are also available
CERTIFICATION	ECE R10.05 certified
WARRANTY	Five-year

ACCESSORIES

Lights and replacement modules sold separately.

BEZELS

Black (includes mounting gasket and hardware)	PLUC2HSB
Chrome (includes mounting gasket and hardware)	PLUC2HSC
White (includes mounting gasket and hardware)	PLUC2HSW

LENS

Additional Options	Extreme angle	PLUC2LN1E
	Horizontal	PLUC2LN1H
	Vertical	PLUC2LN1V

nLINE

Bracket Mount Light



48 Inch Length Shown



48 Inches, 4 Modules per 12 Inches	ENL148(x)
60 Inches, 5 Modules per 12 Inches	ENL160(x)
72 Inches, 6 Modules per 12 Inches	ENL172(x)

Replace (x) in the Order Number for Standard Color Selection

Solid Colors	A = ● B = ● R = ●
Split Colors	D = ●○ E = ●○ F = ●○ J = ●●

Features

- New and improved bracket mount with adjustable bracketry (straight and 60 degrees) included
- Prime applications include rocker panels, push bumpers, tailgates and headache racks
- Distributes exceptional profile visibility to dangerous intersections
- Compact extruded aluminum housing is visually inconspicuous and weather resistant
- 19 inches of wire cable for hard wire installation

INPUT VOLTAGE	10-16 Vdc
CURRENT DRAW	0.3 Amp @ 12.8 Vdc per 12" module
LIGHT SYNC	4 single nLINE lighthead
FLASH PATTERNS	10 flash patterns
OPERATING TEMPERATURE	-40° C to +65° C / -40° F to +149° F
DIMENSIONS	
Widths	48" (121.9 cm); 60" (152.4 cm) or 72" (182.9 cm)
Depth	2.25" (5.7 cm) (all lights)
Height	.75" (1.9 cm) (all lights)
MOUNTING	Bracket mount with adjustable bracketry, straight and 60 degrees
WARRANTY	Three-year

bluePRINT[®] 3 Control System

100 Watt Siren (sealed)



bluePRINT 2 and 3 Central Controller

bluePRINT 3 central controller requires the bluePRINT 3 app

Take Total Control of Your Warning System!

To meet the challenges emergency vehicles face on today's roadways, SoundOff Signal has developed bluePRINT, the industry's most complete, most capable Intelligent Control System. Networked, programmable and logic-driven, bluePRINT enhances safety by automating emergency lighting and siren functions, reducing the need for operator input.

A bluePRINT-equipped vehicle is state-of-the-art and uses vehicle data and other inputs to inform and modify the warning system profile in real time. Agencies benefit with improved policy and law compliance, situation-specific warning profiles, automatic dimming and flash rate adjustments and diagnostics.

bluePRINT provides benefits for installers as well. Up fits become more standardized, reliability is improved and accessories like relays, diodes, timers and fuse blocks are often eliminated. bluePRINT's LINK, a plug-n-play CANbus interface, protects vehicle circuit integrity by eliminating the time and risk of modifying original vehicle wiring.

SoundOff lightbars integrate fully and easily into the system. Secondary lights become remote units, as the system will control their functions, including cruise, low power and flash patterns. Multi-color lights are fully controllable with bluePRINT. Accessories, like cameras, radios and radars, can be powered through bluePRINT to eliminate parasitic drains and provide load shed protection.

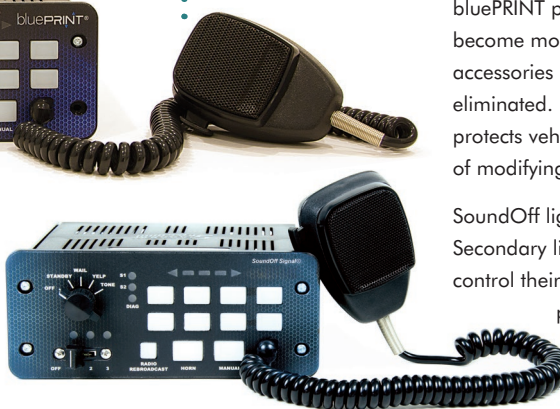
Multi-Function Sirens Features

- Button or knob options available
- 100 or 200 watt options available
(two speakers required with 200 watt siren)

500 Series Siren

Coming Soon!

Refer to page 43 for additional information.



Dual-Tone Siren Features

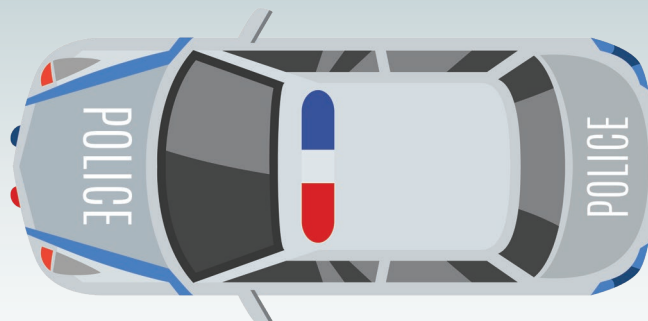
- 100 or 200 watt options available



Remote Node

For a list of certified bluePRINT dealers in your area, visit
www.soundoffsignal.com/sales-support/certified-blueprint-dealers/

- ▶ Practically limitless customization ▶ Officer safety ▶ 82 outputs
- ▶ Link module provides access to vehicle data parameters



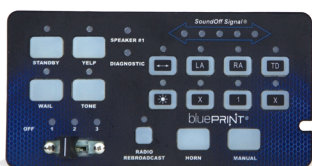
- ▶ Sync ▶ Up to 24 matrices ▶ Installation cost reduction
- ▶ Diagnostics ▶ Improves system reliability and convenience

Handheld Control



Remote Control Panels
Features

- Button or knob remote options available
- Fifteen programmable buttons



Powerful Inputs and Outputs

Scalable and capable, bluePRINT offers up to 82 outputs, 96 inputs, 24 virtual inputs, and 450 amps of power distribution to handle any task. More than 50 vehicle CANbus signals are available to work with. As many as five Remote Nodes can be used to simplify and consolidate wiring. bluePRINT can even run two control heads to provide added flexibility.

Diagnostics

Real-time Windows PC-to-vehicle diagnostic connection provides immediate input/output and CANbus status. Technicians can view current and historical faults, reset outputs, and monitor current. Additionally, all inputs and outputs can be toggled on or off for validation testing of programmed functions and connected devices.

Plan > Prioritize > Program

bluePRINT's Windows-based app allows you to configure your system, name and assign input/output relationships, create logic functions and prioritize system actions with the click of a mouse. Once configured, the program is simply uploaded to bluePRINT allowing for rapid multi-vehicle cloning. Full software support including training is available.

Sync for Safety

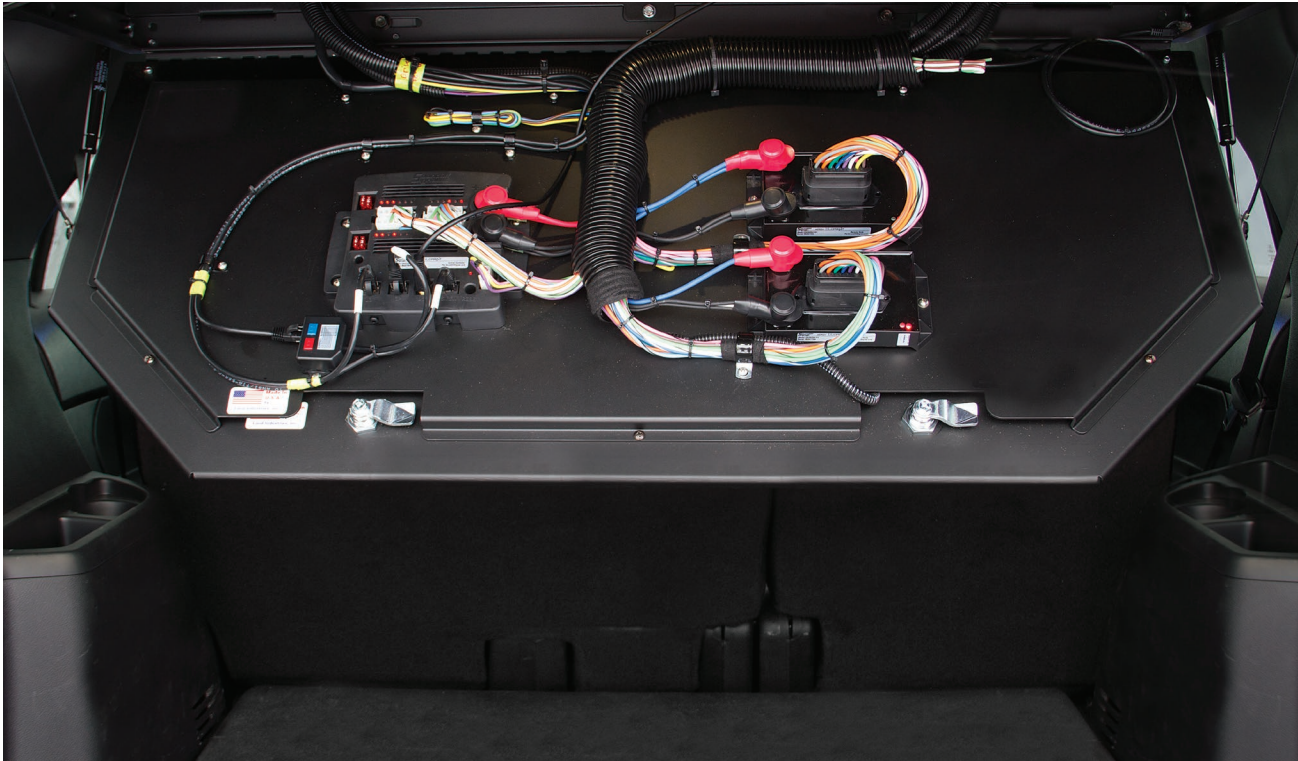
SoundOff Signal's exclusive Sync technology provides true multi-vehicle flash pattern synchronization to improve warning messages. No ongoing fees, no need for connectivity and minimal hardware gets you up and running quickly. See page 41 for additional details.

Input Node



bluePRINT[®] 3 Control System

Improve Safety and Efficiency.
Eliminate Point-to-Point Wiring.
Improve System Reliability and Convenience.



INPUT VOLTAGE	10-16 Vdc (negative ground)
OPERATING TEMPERATURE	-40° C to +65° C (remote node up to 85° C)
TOTAL SYSTEM INPUTS	
Up to 42 Total Inputs	Central Controller Ignition Input Remote Node: 4 each (up to 5 remote nodes can be used throughout vehicle)
TOTAL SYSTEM OUTPUTS	
Up to 86 Total Outputs	Central Controller: up to 4 constant on and 20 programmable outputs Remote Nodes: 10 each (up to 5 remote nodes can be used throughout vehicle) 400 Series PA: 12 non-flashing programmable relay outputs; 3 are 20 Amp outputs
TOTAL SWITCHING CURRENT	
Up to 450 Amps Total	Central Controller: 100 Amp total Remote Node: 50 Amp each (up to 5 nodes) 400 Series PA: 100 Amp total
SOFTWARE REQUIREMENTS	
PC or Tablet (used only for initial programming and diagnostics)	
	Windows 7 SP1 or later Pentium 1GHz or higher Minimum 512 MB of RAM Minimum disk space of 5 GB NET 4.5 Library (will be prompted to download if not already installed, .Net 4.6) USB 1.1 or higher, cable with Type B plug

For a list of certified bluePRINT dealers in your area, visit
www.soundoffsignal.com/sales-support/certified-blueprint-dealers/

bluePRINT³ Link[®] Module

When used with the bluePRINT controller, the bluePRINT Link module allows access to a variety of the vehicle's data parameters.



Module



Central Cable



Vehicle Specific Network Cable

Features

- By incorporating the bluePRINT Link module into the vehicle, the need to splice into discrete wire triggers can be greatly reduced
- Reduces time that is required to install a bluePRINT system into a vehicle
- Increases system reliability due to issues when wiring into discrete triggers
- Provides access to vehicle parameters that may not have been available via discrete wires, such as door status, battery voltage, and vehicle speed, to name a few
- Vehicle parameters can be mapped as input triggers to automate the control of vehicle lighting

Vehicle Models and Years

Chevrolet Models

Years

GMC Savana Vans.....	2008-2019
GMC Yukon.....	2014-2020
Express Vans	2008-2019
Silverado Pickup Trucks	2014-2019
Sierra Pickup Trucks	2014-2019
Suburban	2014-2020
Tahoe.....	2014-2020

FCA

Models

Years

Charger Pursuit.....	2015-2019
1500, 2500, 3500, 4500 and 5500.....	2013-2019
RAM Pickup Trucks	
Durango Pursuit.....	2018-2019

Ford Models

Years

E-Series Super Duty Vans.....	2009-2019
E-350 Super Duty Vans	2009-2017
Expedition	2015-2019
F-250, F-350, F-450 and F-550 Pickup Trucks	2011-2018
PI Sedan.....	2013-2018
PI Utility.....	2013-2020
Escape	2016-2017
Transit Van	2015-2018
Explorer	2016-2018
F-150.....	2015-2020
F-150 Responder	2015-2019

Contact your sales representative for latest vehicle models and years.

WARRANTY

Three years from the in-service date (if the warranty registration is completed on-line)
Visit <https://www.soundoffsignal.com/product-registration/> to register this product

One year from the date the product was shipped (if the warranty registration was not completed)

bluePRINT Sync™



GPS Module and Antenna **ENGSYM01**



Antenna Service Part **ENGSYAT01**

Features and Requirements

What is bluePRINT Sync?

- bluePRINT Sync is an add-on component for the bluePRINT 3 System
- It provides true warning system coordination between vehicles
- Sync-equipped emergency vehicles will automatically flash in perfect timing when using the same pattern
- Because of bluePRINT's flexibility in programming, single and multi-color patterns can be set to match or be different based on environmental and operator variances
- When matched with bluePRINT LINK, Sync becomes the industry's first lighting sync system that can be programmed to automatically change colors, patterns or intensities based on input from the vehicle such as speed, and ambient lighting

Why use bluePRINT Sync?

- Improved warning messages. Slow, medium or fast patterns are much more effective and noticeable when multiple vehicles are utilizing synchronized patterns
- Reduced distractions and confusion of multiple, random flashing lights. Approaching drivers can better judge the emergency vehicle's status.
- Improved work area visibility for officers and other roadway users
- Enhanced professional image of all warning or response vehicles on a scene
- Enhanced tactical presence of police by calming scenes and implying control

How Does it Work?

- bluePRINT Sync utilizes GPS technology to keep patterns in sync. Car-to-Car communication is not necessary with this technology
- Using GPS technology means there is no required distance for vehicles to synchronize patterns. They are always in sync, no matter how far they are from one another
- Since bluePRINT Sync works in the background to synchronize patterns, there are ideas that should be discussed with bluePRINT users and programmers regarding the best way to utilize the technology
- Each bluePRINT Sync kit includes a Sync Module, GPS Antenna, Ethernet Splitter and 3' ethernet cable

Hardware Requirements. Only a bluePRINT Central Controller with firmware version 3.08 and newer is required for use with bluePRINT Sync.

Software Requirements. All programming for bluePRINT require access to the bluePRINT Configuration Software. Sync is supported in bluePRINT version 3.8.2 and newer.

Antenna Recommendation. SoundOff Signal only offers technical GPS support using the included GPS antenna Using an antenna other than the recommended can possibly damage the bluePRINT Sync module. Damage to the Sync module from improper antenna usage is not covered under warranty.

INPUT VOLTAGE	10-16 Vdc
OPERATING TEMPERATURE	- 40° C to +65° C
CURRENT DRAW	<100mA @ 12.8 Vdc
SYSTEM REQUIREMENTS	bluePRINT 3 app must be utilized to configure the system Central controller must have v3.08 or later installed
DIMENSIONS	
Module	Length 3.4" (8.6 cm) Height 0.9" (2.2 cm) Depth 1.6" (4.1 cm)
Antenna Base	Length 1.6" (4.0 cm) Height 0.4" (1.0 cm) Depth 1.5" (3.7 cm)
WARRANTY	One-year



- Similar to the 400 Series remote PA control panel without having the PA tone control
- Retains radio rebroadcast and PA features for applications that do not require tone controls
- Provides up to seven 10 amp and three 20 amp outputs with internal fuses for powering solenoids (amplifier required) or supplying power and signaling to other onboard peripherals (printer, GPS, etc.)
- Built-in protection against over/under voltage, short circuit and reverse polarity
- Features an eight-second buzzer alert to notify users that the level or auxiliary buttons are activated
- Cabling setup is the same as the 400 PA Series allowing for easy swap-in
- Dimmable green LED backlighting
- Dual control panel capability

www.soundoffsignal.com

500 Series

Remote, Console and Handheld Sirens

Coming Soon!



Features

- 200 watt sirens feature dual-tone capability to deliver two siren tones at once to provide officers with extreme “traffic moving” capability
- Designed with extra large buttons with appropriate spacing to eliminate buttons to be accidentally pressed
- Provides up to nine 10 amp, three 20 amp and nine 5 amp outputs with internal fuses for powering solenoids (i.e. gun lock) or supplying power and signaling to other on board peripherals (printer, radar, GPS, etc.) Up to 15 of these outputs are solid-state and flashable
- Nine discrete wire inputs
- Built-in protection against over/under voltage, short circuit and reverse polarity
- Building-in bluePRINT® programmability with input and output expansion modules, timers and load shedding
- Multiple lightbar connections with integrated breakout box functionality
- USB programming with improved diagnostic capabilities
- Compatible with all 400 Series siren control panels

Remote Sirens (with remote conversion kit)

- Removable microphone with quarter inch plug (remote with knob)
- Officers value the sound intensity of the dual-tone feature “fooling” perpetrators into believing multiple police vehicles are in pursuit
- Hands-free feature allow siren tones to be cycled or cancelled by pressing horn (horn-ring circuit must be connected)

Console Sirens (shown)

- Unlike other competitors, nERGY offers two console versions. One version has a five position rotary switch and the other features a four push button switch
- Horn ring scroll provides ability to quickly change tones with the tap of the horn

Handheld Siren

- Provides unique advantages unlike any product on the market today: LED, alley and arrow handheld switch indicators for convenient viewing and extensive programmability
- Horn ring scroll provides ability to quickly change tones with the tap of the horn

nERGY® 400 Series

Remote, Console and Handheld Sirens

Remote



Knob

100 Watts

200 Watts

ETSA481RSR

ETSA482RSR



Button

100 Watts

200 Watts

ETSA481RSP

ETSA482RSP

Console



Console with Knob

100 Watts

200 Watts

ETSA481CSR

ETSA482CSR



Console with Button

100 Watts

200 Watts

ETSA481CSP

ETSA482CSP

Handheld



Handheld

100 Watt

200 Watt

100 Watt (13 feet coil cable length)

200 Watt (13 feet coil cable length)

ETSA461HPP

ETSA462HPP

ETSA461HPP-EXT

ETSA462HPP-EXT

Note: 2 speakers required with the 200 watt version sirens.

Features

Remote, Console and Handheld Sirens

- 200 watt sirens feature dual-tone capability to deliver two siren tones at once to provide officers with extreme "traffic moving" capability
- Designed with extra large buttons with appropriate spacing to eliminate buttons to be accidentally pressed
- Provides up to eight 10 amp and three 20 amp outputs with internal fuses for powering solenoids (i.e. gun lock) or supplying power and signaling to other on board peripherals (printer, radar, GPS, etc.)
- Built-in protection against over/under voltage, short circuit and reverse polarity

nERGY® 400 Series

Remote, Console and Handheld Sirens

Features

Remote Sirens

- Removable microphone with quarter inch plug (remote with knob)
- Officers value the sound intensity of the dual-tone feature “fooling” perpetrators into believing multiple police vehicles are in pursuit
- Hands-free feature allow siren tones to be cycled or cancelled by pressing horn (horn-ring circuit must be connected)

Console Sirens

- Unlike other competitors, nERGY offers two console versions. One version has a five position rotary switch and the other features a four push button switch
- Horn ring scroll provides ability to quickly change tones with the tap of the horn

Handheld Siren

- Provides unique advantages unlike any product on the market today: LED, alley and arrow handheld switch indicators for convenient viewing and extensive programmability
- Horn ring scroll provides ability to quickly change tones with the tap of the horn

WATTS	100 and 200 Watts (2 speakers required with the 200 watt version sirens)
INPUT VOLTAGE	10-16 Vdc
DIMENSIONS	
Remote Sirens	
Handheld Panel	
Height	3.51" (8.92 cm)
Width	6.98" (17.73 cm)
Depth	1.17" (2.98 cm)
Amplifier/Relay	
Height	2.62" (6.66 cm)
Width	7" (17.80 cm)
Depth	6.51" (16.54 cm)
Console Sirens	
Console Faceplate	
Height	3.17" (8.5 cm)
Width	7.54" (19.15 cm)
Amplifier/Relay	
Height	2.64" (6.73 cm)
Width	7.02" (17.84 cm)
Cut-out	
Height	2.72" (6.91 cm)
Width	7.10" (18.034 cm)
Handheld Siren	
Panel	
Height	3.51" (8.92 cm)
Width	6.98" (17.73 cm)
Depth	1.17" (2.98 cm)
Amplifier/Relay	
Height	2.62" (6.66 cm)
Width	7" (17.80 cm)
Depth	6.51" (16.54 cm)
CERTIFICATIONS	Meets or exceeds SAE J1849 CA Title 13 sound levels when used with SoundOff Signal® speakers
WARRANTY	Five-year

200 Series

Remote Sirens

PA Function Siren



PA Function, Remote Amplifier and Remote Switch Panel

Single 100 Watt (connector is sold separately)

Molex Connector and Mating Harness; Weatherproof

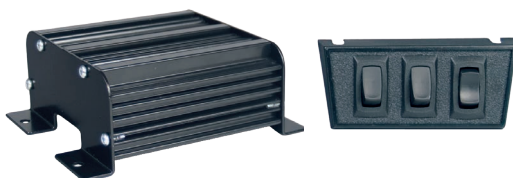
Delphi Connector and Mating Harness

ETSA200R-PA

ETSA200RA-PA

ETSA200RW-PA

Compact Siren



Compact, Remote Amplifier and Remote Switch Panel

100 Watt

Molex Connector and Mating Harness

Delphi Connector and Mating Harness

ETSA200R

ETSA200RA

ETSA200RW

Features

PA Function, Remote Amplifier and Remote Switch Panel

- The microphone includes a pre-amp, 15 feet of power and signal cable, adjustable gain and a three-pin removable connector
- The pre-amp features an additional gain adjustment

Compact, Remote Amplifier and Remote Switch Panel

- Compact siren has a small, remote amplifier to fit tight spaces for undercover vehicles or motorcycles

PA Function, Remote Amplifier and Remote Switch Panel

Compact, Remote Amplifier and Remote Switch Panel

- Class D technology with high speed digital switching provides higher efficiency, less current draw and better reliability
- Operates a single 100 watt speaker or dual 58 watt speaker (compact, remote amplifier only)
- Five warning tones (up to three tones can be activated) wail, yelp, piercer, hi-lo or super hi-lo, an additional four air horn tones available
- Horn ring (hands free operation) controls the tones and can be programmed to broadcast warning or air horn tones.
- Volume can be set for the public address (PA) and radio rebroadcast within the 200R amplifier; this feature can be pre-set to a desired level during installation
- Park/kill feature disables the siren when the vehicle is placed in park
- Built-in protection against over/under voltage, over temperature, short circuit and reverse polarity
- Hermetically sealed, providing protection in wet areas

WATTS	100 Watts
INPUT VOLTAGE	10-30 Vdc
DIMENSIONS	
Length	5.4" (13.7 cm)
Height	2.3" (5.8 cm)
Depth	4.6" (11.6 cm)
CERTIFICATIONS	Meets or exceeds SAE J1849, CA Title 13 sound levels when used with SoundOff Signal® speakers ECE R10.05 certified (compact siren only)
WARRANTY	Two-year

LF Aftershock

Siren System



Siren System, Includes Universal Bracket

100 Watt Speaker, 200 Watt Amplifier **ETSKLF100**

Two (2) 100 Watt Speakers, 200 Watt Amplifier **ETSKLF200**

Speaker, Includes Universal Bracket

Low Frequency Speaker, 100 Watt **ETSSLF100**

Vehicle Specific Brackets

Siren and speaker sold separately.

Dodge	Charger	Lower Frame Mount (no drill)	2011-2019	ETSSLFVBK08
	Durango	Upper and Lower Frame Mount	2016-2019	ETSSLFVBK01
		Lower Frame Mount (no drill)	2016-2019	ETSSLFVBK02
Ford	PI Utility	Lower Frame Mount	2015-2019	ETSSLFVBK03
Ford	PI Utility	Lower Frame Mount	2020	ETSSLFVBK07
Ford	PI Utility	Driver Side	2020	ETSSLFVBK09

Features

- Highly effective low frequency sound waves create deep warning tones for enhanced traffic clearing
- Ideal for areas with heavy traffic and busy intersections
- Includes universal bracket

WATTS	100 Watts with 1 speaker or 200 Watts with 2 speakers
INPUT VOLTAGE	10-16 Vdc
OPERATING TEMPERATURE	- 40° C to +65° C
CURRENT DRAW	8 Amps at 100 Watts and 16 Amps at 200 Watts
OUTPUT VOLTAGE	58-64 Vpk-pk
DIMENSIONS	
Siren	
Height	2.4" (6 cm)
Width	4.7" (11.9 cm)
Depth	5" (12.7 cm)
Speaker	
Height	8.5" (21.6 cm)
Diameter	7.2" (18.4 cm)
WARRANTY	Three-year

100C Series

Speaker



ETSS100C

Vehicle Specific Brackets

Speaker sold separately.

Chevrolet	Caprice	Driver Side	2011-2017	ETSS100BKCP-D
	Caprice	Passenger Side	2011-2017	ETSS100BKCP-P
	Impala		2006-2016	ETSS100BKPALA
	Tahoe	Driver Side	2015-2016	ETSS100CBKTH15-D
	Tahoe	Passenger Side	2015-2016	ETSS100CBKTH15-P
	Tahoe		2006-2014	ETSS100CBKTH
Dodge	Charger		2011-2017	ETSS100CBKDC11
	Charger	Bumper Mount (no drill)	2015-2017	ETSS100CBKDC15
Ford	PI Sedan	Bumper Mount (no drill)	2013-2017	ETSS100CBKFS-BP
	PI Utility	Bumper Mount (no drill)	2016-2017	ETSS100CBKFV-BP
	PI Utility	Frame Mount, Driver Side	2013-2017	ETSS100BKFV-FR
	PI Utility	Frame Mount, Passenger Side	2013-2015	ETSS100BKFV-FS

Features

- Designed with clear, powerful output using neodymium magnet
- Weatherproof and corrosion resistant cast aluminum housing
- Perfect for public address and other high intelligibility communication and signaling applications
- Includes universal bail bracket

WATTS	100 Watts
DIMENSIONS	
Height	6.625" (16.1925 cm)
Width	6.75" (13.335 cm)
Depth	2.3125" (7.6 cm)
WARRANTY	Five-year

100J Series

Composite Speaker



ETSS100J

Vehicle Specific Bracket

Speaker sold separately.

Ford PI Utility Bumper Mount (no drill) 2020 ETSSVBK01

Features

- Composite housing creates electrical isolation from vehicle chassis to extend product life
- Weather tested, glass reinforced nylon material will not corrode like a traditional aluminum speaker
- Designed for passive water and moisture egress
- Designed for clear, powerful output using neodymium magnet
- Compact design with powerful 100 watt output
- Ferro-fluid filled coil
- Includes universal bail bracket
- Meets CA Title 13, Class A when used with SoundOff Signal siren amplifier

WATTS	100 Watts	
DIMENSIONS	Without Bracket	With Bracket
Height	6.75" (17.1 cm)	7.5" (19 cm)
Width	6.75" (17.1 cm)	6.88" (17 cm)
Depth	3.5" (8.9 cm)	3.5" (8.9 cm)
WARRANTY	Two-year	

100U and XWA Series

Composite Speakers

Coming Soon!



100U Series



XWA Series

100N Series

Composite Speaker



ETSS100N

Vehicle Specific Brackets

Speaker sold separately.

Chevrolet	Caprice	Driver Side	2011-2017	ETSS100BKCP-D
	Caprice	Passenger Side	2011-2017	ETSS100BKCP-P
	Tahoe	Driver Side	2015-2016	ETSS100CBKTH15-D
	Tahoe	Passenger Side	2015-2016	ETSS100CBKTH15-P
Dodge	Charger		2011-2017	ETSS100CBKDC11
	Charger	Bumper Mount (no drill)	2015-2017	ETSS100CBKDC15
Ford	PI Sedan	Bumper Mount (no drill)	2013-2017	ETSS100CBKFS-BP
	PI Utility		2013-2017	ETSS100BKFD-FR
	PI Utility	Bumper Mount (no drill)	2016-2017	ETSS100CBKFV-BP
	PI Utility	Frame Mount, Driver Side	2016-2017	ETSS100BKFV-FR
	PI Utility	Bumper Mount (no drill)	2020	ETSSVBK01

Features

- Weather tested, glass reinforced nylon material will not corrode like a traditional aluminum speaker
- Composite housing creates electrical isolation from vehicle chassis to extend product life
- Improved design for passive water and moisture egress
- Designed for clear, powerful output using neodymium magnet
- Compact design with powerful 100 watt output
- Weatherproof and corrosion resistant cast aluminum housing
- Perfect for public address and other high intelligibility communication and signaling applications
- Includes universal bail bracket

WATTS	100 Watts
DIMENSIONS	
Height	6.25" (15.88 cm)
Width	6.25" (15.88 cm)
Depth	2.67" (6.78cm)
CERTIFICATIONS	SAE J1849 certification requirements when used with SoundOff Signal® 400 Series sirens
WARRANTY	Five-year

Intelliswitch 990 and 993

Digital Switches

Switches



990 Digital Switch ETSP990



993 Digital Switch with Power Pursuit Buttons ETSP993

Features: 990

- Offers six Ryno-Tuf durable push buttons that are fully programmable with 60 amp maximum output with one push button that can be set as an eight second timed momentary if needed
- Model offers high speed action, low current draw and increased reliability with efficient digital technology
- Switches can be console mounted if desired
- Compact, slim design with self performing diagnostics at power-up to ensure optimum performance

Features: 993

- Offers 11 programmable buttons, nine total Ryno-Tuf push buttons, three power pursuit with two hidden "discreet" membrane buttons located behind the SoundOff Signal® logo
- Configure the power pursuit buttons to operate any combination of the 6 remaining push buttons automatically, eliminating hours of tedious wiring
- Two hidden membrane switches can be programmed for discreet functions of your choice such as timed gun lock
- Model offers high speed action, low current draw and increased reliability with efficient digital technology
- Switches can be console mounted if desired
- Compact, slim design with self performing diagnostics at power-up to ensure optimum performance



Both models feature Ryno-Tuf push buttons, 60 title legend sheets and an optional bracket with mounting hardware.

INPUT VOLTAGE 12 Vdc

CURRENT DRAW

990 60 Amp maximum
993 2 Amp maximum

DIMENSIONS

Width 6.5" (16.5 cm)
Height 2.5" (6.4 cm)
Depth 2" (5.1 cm)

MOUNTING 2-piece swivel style bracket included or can be console mounted

WARRANTY Five-year

600, 900 Series and Directional Arrow Switches

600 and 900 Series



600 Series 6 Function Switch

ETSP6F



900 Series Function Switch

ETSP9F

Features: 600 Series

- Six mini rocker switches with red LED indicator ON lights. Has a single 40 amp relay/circuit breaker with five to twenty amp fused switch output
- Includes switch box with universal bracket, mounting hardware, switch labels and 18" pigtail with insulated quick connects for termination

Features: 900 Series

- Nine functions, three position slide switch with six mini rocker switches. Slide switch features 20 amp/output with LED indicator on lights
- Includes switch box with universal bracket, mounting hardware, switch labels and 18" pigtail with insulated quick connects for termination

INPUT VOLTAGE	12 Vdc
CURRENT DRAW	
600 Series	40 Amp max
900 Series	60 Amp max
DIMENSIONS	
Width	6.2" (16 cm)
Height	2.2" (5.6 cm)
Depth	5.2" (13 cm)
WARRANTY	One-year

DIMENSIONS

Directional Arrow



Directional Arrow Switch

ETSWDAS01

Feature

- Seven programmable warning modes with a fully illuminated display to show pattern activated and input selected

INPUT VOLTAGE	10-30 Vdc
CURRENT DRAW	.8 Amp
DIMENSIONS	
Width	6.5" (17 cm)
Height	3.5" (8.9 cm)
Depth	1.2" (3 cm)
WARRANTY	One-year

DIMENSIONS

SW830 Multi-purpose Control Panel

with Power Module



Streamlined 8-Button Controller

ETCPMSW830

Features

- Eight switches control panel with three 10 amp and five 0.2 amp outputs for auxiliary device power or function activation
- All back lit rubber touch buttons
- Fully programmable buttons in ON/OFF or momentary switch mode
- 35 selectable icon stickers to clearly label panel

INPUT VOLTAGE	10-24 Vdc	
INPUT CURRENT	Peak 32A, Average 21A / Min 0.01A	
CONTROL PANEL CABLE	8 pin RJ45 cable, 24 AWG, 4m	
OPERATING TEMPERATURE	-30° C to +65° C	
DIMENSIONS	Control Panel	Power Module
Length	3.74" (9.5 cm)	4.4" (11.18 cm)
Height	2.7" (6.86 cm)	3.5" (8.9 cm)
Depth	1" (2.54 cm)	1.05" (2.67 cm)
WARRANTY	One-year	

Headlight Plug-in Flashers

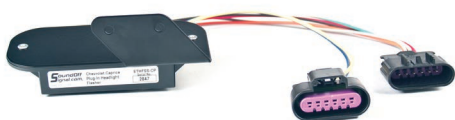


Ford PI Utility, 2016-2019

ETHFFUT-16

Features

- Select-a-Pattern Technology with seven user selectable flash patterns: PowerPulse, RoadRunner, ETM, Cycle Flash, Q-Switch, Single Flash or Double Flash Alternating
- Durable and non-corrosive ABS plastic housing
- 100% solid state output, potted design for long-lasting, reliable performance
- Positive switching
- 10-16 Vdc



Chevy Caprice, 2011-2017

ETHFSS-CP



Chevy Tahoe, Solid State, 2007-2020

ETHTAH0-07+

Features

- Easy installation with plug-in connectors for police package models
- Single flash pattern, PowerPulse
- Features high beam override
- Built-in shutdown protection against loss of ground, short circuit and under voltage
- Durable and non-corrosive ABS plastic housing
- 100% solid state, potted design for long-lasting, reliable performance

Headlight Flasher



8-30 Vdc, 9.5 amp output and 18" wire leads

8-30 Vdc, 9.5 amp output, isolated, extended and loomed leads, mounting bracket

8-30 Vdc, 9.5 amp output, fleet connector amp

8-30 Vdc, 9.5 amp output, isolated, 18 inch leads

ETHFSS-SP

ETHFSS-FV

ETHFSS-SPFL

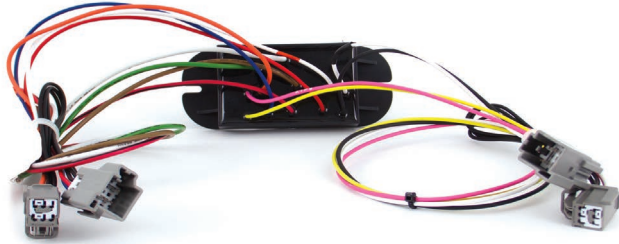
ETHFSS-SP-ISO

Features

- Select-a-Pattern Technology with eight user selectable flash patterns
- Ideal for most "big three" car models - designed for two to four headlight positive side switched headlight systems
- Durable and non-corrosive ABS plastic housing
- 100% solid state output, potted design for long-lasting, reliable performance
- Positive switching

Flashback Alternating Taillight

Solid State Flashers



Ford PI Utility, 2016-2020

ETTFUT-16

10-16 Vdc, 5 amp output, isolated

10-16 Vdc, 5 amp output, isolated, fleet connector

ETFBSSN-P

ETFBSANFL

Features

- Twelve wire module with isolating diodes for the brake and reverse wire that are required for many new vehicles
- For use with vehicles that have the negative post of the battery connected to the chassis of the vehicle
- Provides an additional output for deck lights
- Alternating red and white light creates an effective rear warning signal to greatly reduce rear end collisions
- 100% solid state, potted design for long-lasting, reliable performance



LED Light Flasher



Two output with eight flash patterns

ETFFC02LED

Features

- Synchronizes all LED warning lights, overrides all SoundOff Signal® LED warning lights to take over pattern control
- Two LED flashers offer seven user selectable flash patterns
- For use with LED lights only

Opticom™ Preemption LED Module

Opticom™ is a registered trademark of Global Traffic Technologies, LLC.



Infrared High Priority

EGTTE794H

LIGHT SYNC	Yes
INPUT VOLTAGE	10-32 Vdc
CURRENT DRAW	<1 Amp
OPERATING TEMPERATURE	-30° F to -165° F / -34° C to +74° C
DIMENSIONS	
Width	4.5" (11.5 cm)
Height	3.16" (8.0 cm)
Depth	2.23" (5.7 cm)
CERTIFICATIONS	SAE J575 and J455 certified
WARRANTY	Five-year

Features

- Provides emergency vehicle preemption to all intersections equipped with Opticom Infrared systems. Module generates a series of pulses in the infrared wavelength to allow preemption for emergency vehicles
- High efficiency LEDs require up to 90% less electrical power than conventional emitters, conserving power for other onboard emergency equipment. LED technology provides a higher level of consistent performance over the life of the emitter

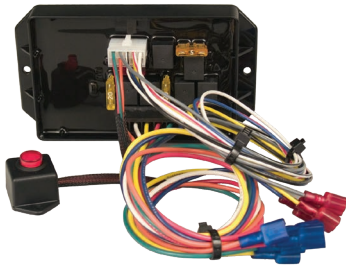
Ignition Security Systems

Heavy Duty and Standard



Heavy Duty Model

ETISSO-06+



Standard Model

ETISSO-07+

Features: Heavy Duty Model

- Designed to be compatible with many different types of vehicles
- For heavy duty vehicles that require higher current draw through the ignition switch
- Allows the vehicle to stay running when the key is removed from the ignition switch
- Brake pedal and shift lever movement disables the ignition security system and stops the engine (sounds horn if connected)
- Over-ride simply deactivates by turning the key to the run position and depressing brake
- Additional relay output provides normally open or normally closed contact for starter disable, gun lock disable, camera record, etc.
- Optional horn or siren alarm

Features: Standard Model

- Easy to install and designed to be compatible with a variety of vehicles
- Connectors allow for quick replacement/removal of the ignition security system
- Allows the vehicle to stay running when the key is removed from the ignition switch
- Brake pedal and shift lever movement disables the ignition security system and stops the engine (sounds horn if connected)
- Override simply deactivates by turning the key to the run position and depressing brake
- Automatic low voltage detection will activate the horn to provide notification of vehicle problems
- Additional universal output provides normally open or normally closed contact for starter disable, gun lock disable, camera record, etc.

INPUT VOLTAGE	10-16 Vdc
CURRENT DRAW	
Heavy Duty	8 outputs, 130 Amp total
Standard	4-10 Amp output
DIMENSIONS	
Heavy Duty	
Length	6" (15 cm)
Height	3.5" (8.9 cm)
Depth	1.5" (3.8 cm)
Standard	
Length	6" (15 cm)
Height	3.4" (8.6 cm)
Depth	0.8" (2.0 cm)
MOUNTING	
Heavy Duty	Behind dash, within wire length of the steering column, on 5.6" (14 cm) centers, 16" (41 cm) wires
Standard	Behind dash, within wire length of the steering column, on 5.6" (14 cm) centers, 24" (61 cm) wires
WARRANTY	One-year

Dome Interior Lights

Night Light, Red LEDs



Dodge Charger, Ford PI Sedan
and Ford Utility

ECVDMLTALDC

Features

- Reverse polarity protection
- Load dump protection
- LED dome lights offer a low amp draw, superior efficiency and hours of long-lasting reliability

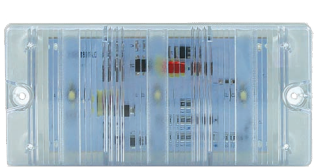
INPUT VOLTAGE RANGE	10-30 Vdc
CURRENT DRAW	White LEDs: 129-156mA @ 13.5 Vdc Red LEDs: 106-129mA @ 13.5 Vdc
TECHNOLOGY	12 white LED and 12 red LEDs
OPERATING TEMPERATURE	-20° C to +65° C / -4° F to +149° F
DIMENSIONS	
Diameter	6.2" (15 cm)
Depth	1.54" (2.3 cm)
MOUNTING	Surface mount
WARRANTY	Five-year

Universal, White LEDs



White Dome (shown)
White Dome, Grey Base

ECVDMLTST4
ECVDMLTST4G



White Dome

ECVDMLTST2

Features

- Easy on the electrical system
- Great for interior light for overhead lighting

INPUT VOLTAGE RANGE					
ECVDMLTST4	10-16 Vdc	ECVDMLTST4G	10-16 Vdc	ECVDMLTST2	10-30 Vdc
CURRENT DRAW					
ECVDMLTST4	<0.45 Amp	ECVDMLTST4G	<0.45 Amp	ECVDMLTST2	<0.65 Amp
DIMENSIONS					
ECVDMLTST4		ECVDMLTST4G		ECVDMLTST2	
Width	6" (15.24 cm)	Width	6" (15.24 cm)	Width	7" (17.78 cm)
Height	3" (7.62 cm)	Height	3" (7.62 cm)	Height	3.25" (8.25 cm)
MOUNTING	Surface mount				
WARRANTY					
ECVDMLTST4	Two-year	ECVDMLTST4G	Two-year	ECVDMLTST2	Five-year

Strip Interior Lights

Strip Mount



12" Length, 10-16 Vdc	ECVCSMLEDF
12" Length, 10-30 Vdc	ECVCSMLEDF-24

Features

- Light has a white steel base with a scratch resistant polycarbonates lens
- Specially engineered Fresnel lens to boost light output and brightness
- Includes 2-wire lead with a 18" length

90 Degree Corner Mount



10" Length, 10-16 Vdc	ECVCSLLED10	10" Length, 10-30 Vdc	ECVCSLLED10-30
21" Length, 10-16 Vdc	ECVCSLLED21	21" Length, 10-30 Vdc	ECVCSLLED21-30
32" Length, 10-16 Vdc	ECVCSLLED32	32" Length, 10-30 Vdc	ECVCSLLED32-30
43" Length, 10-16 Vdc	ECVCSLLED43	43" Length, 10-30 Vdc	ECVCSLLED43-30

Features

- Streamlined, low amp draw LED lighting
- Easy installation - make a simple 2-wire electrical connection
- Glossy white powder coated aluminum housing with a polycarbonates lens
- Includes 2-wire lead with a 18" length

Flush Mount



12" Length, 10-16 Vdc	ECVCLLED12
24" Length, 10-16 Vdc	ECVCLLED24
36" Length, 10-16 Vdc	ECVCLLED36
42" Length, 10-16 Vdc	ECVCLLED42

Features

- Specially engineered lens optic directs light away from viewer's eye
- Glossy white powder coated aluminum housing with a polycarbonates lens
- Includes 2-wire lead with a 18" length and end/trim caps

Strip, 90 Degree Corner and Flush Mounts

CURRENT DRAW	0.4 Amp per 12" length
WARRANTY	Five-year

PAR46 Unity®

Spot Light Insert



Spot Lens, White LEDs **ESL461WC**

Features

- Easy installation
- LED technology rated at 215,000 candlepower with up to 50,000 hours of lamp life
- Two degrees tightly controlled focus
- Hard-coated, polycarbonate lens that is break resistant, virtually indestructible

LED COUNT	9 LEDs
INPUT VOLTAGE	12 Vdc
CURRENT DRAW	2.4 @ 12 Vdc
OPERATING TEMPERATURE	-40° C to +50° C / -40° F to +122° F
DIMENSIONS	
Width	5.75" (14.8 cm)
Depth	3.3" (8.4 cm)
CERTIFICATIONS	SAE J575, 578 and 591 certified
WARRANTY	Five-year

Mighty Night Light

400 Lumen LED Spot Lights

Forward Facing Lens



15 Degrees **EAUSSMB0AWC**

Flood Lens



20 Degrees **EAUSSMB0SWC**



45 Degrees **EAUSSMB0FWC**

Features

- High powered white LED spot lights with a compact size that allows you to use it anywhere you have restricted space such as push bumpers or around the license plate
- Powerful and bright 400 lumen output
- Can be mounted vertically or horizontally

INPUT VOLTAGE	10-30 Vdc
CURRENT DRAW	0.45 to 0.65 Amps @ 12.8 Vdc
LED COUNT	1 LED
ILLUMINATION PATTERNS	
FORWARD FACING	15°
STANDARD FLOOD	20°
FLOOD	45°
OPERATING TEMPERATURE	-40° to +65° C / -40° to +149° F
COLOR TEMPERATURE	5700k
DIMENSIONS	
Length	2.8" (7.1 cm)
Height	4.1" (10.4 cm)
Depth	1.3" (3.3 cm)
MOUNT	Surface mount on 3.5" (8.9 cm) centers

GOLIGHT

Halogen Search Light

Hardwired Dash, Wireless Handheld and Dash Mount Remotes

Coming Soon!

Features

- Exclusive CR5 pentabeam technology
- 370° rotation x 135° tilt
- 225,000 candela, max beam distance of 3,113 feet
- 5.5 amps
- 8° beam angle
- 65 watt H9 bulb
- UV ray and saltwater resistant

Emergency Solutions 2020 Product Catalog



www.soundoffsignal.com

PO Box 206
Hudsonville, MI 49426

Toll free: 1.800.338.7337
Office direct: 616.896.7100
Order fax: 616.896.1286

© 2020 SoundOff Signal

Printed in the USA

All rights reserved

Specifications and availability are subject to change without notice

