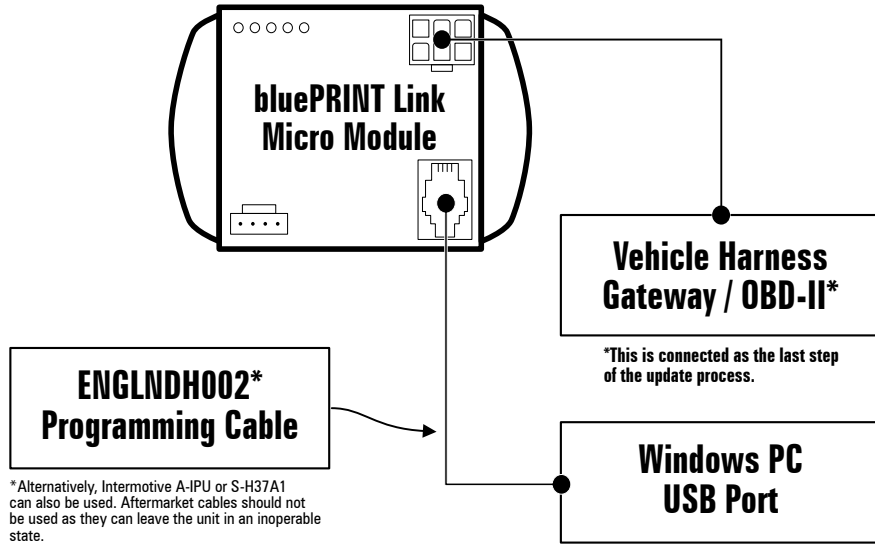




bluePRINT Link® Firmware Programming Cable ENGLNDH002



WARNING

- bluePRINT Link installation requires interfacing with the vehicle CANBUS system. All connections should be double-checked and secured prior to completing installation.
- Refer to vehicle manufacturer's instructions for connection to the CANBUS.
- DO NOT install this product or route any wires in the Air Bag Deployment Zone. Refer to vehicle Owner's Manual or Upfit Guide for deployment zones.
- Do NOT use system to disconnect headlights, brake lights or other safety equipment.
- Unit may become hot to touch during normal operation.
- Failure to properly install connectors, fuses or wiring may cause vehicle failure or fire.
- Installation must only be performed by trained technician. Installer must determine vehicle wiring configuration and proper integration of system
- Install protective grommets when routing wire through firewall or metal.
- Confirm that CANBUS signals are being accurately reported using the diagnostic tool provided in the configuration software.

NOTICE:

Installers and users must comply with all applicable federal, state and local laws regarding use and installation of warning devices.

Improper use or installation may void warranty coverage. To review our Limited Warranty Statement & Return Policy for this or any SoundOff Signal product, visit our website at <https://soundoffsignal.com/support-page/warranty/>. All returned items must be properly packed to prevent damage in transit.

*If you have questions regarding this product, contact **Technical Services**, Monday - Friday, 8 a.m. to 5 p.m. at **1.800.338.7337** (press #4 to skip the automated message). Questions or comments that do not require immediate attention may be emailed to techgroup@soundoffsignal.com.*

Software Installation

Download and install Intermotive Download Manager using the link below:

- <https://intermotive.net/downloads/>
- Intermotive Download Manager is intended to work with Windows computers.

Download and install D2xx FTDI Drivers using the link below:

- <https://ftdichip.com/drivers/d2xx-drivers/>
- After installation, connect to a powered central controller, breakout box, or bluePRINT Link BEFORE running Intermotive Download Manager.
- Note: bluePRINT uses these drivers. There is a good chance these may already be installed.

Operating System	Release Date	X86 (32-bit)	X64 (64-bit)	ARM	MIPS	SH4	Comments
Windows*	2017-08-30	2.12.28	2.12.28	-	-	-	WHQL Certified Includes VCP and D2XX. Available as a setup executable . Please read the Release Notes and Installation Guides .

Download and install Java using the offline installation files found at the following link:

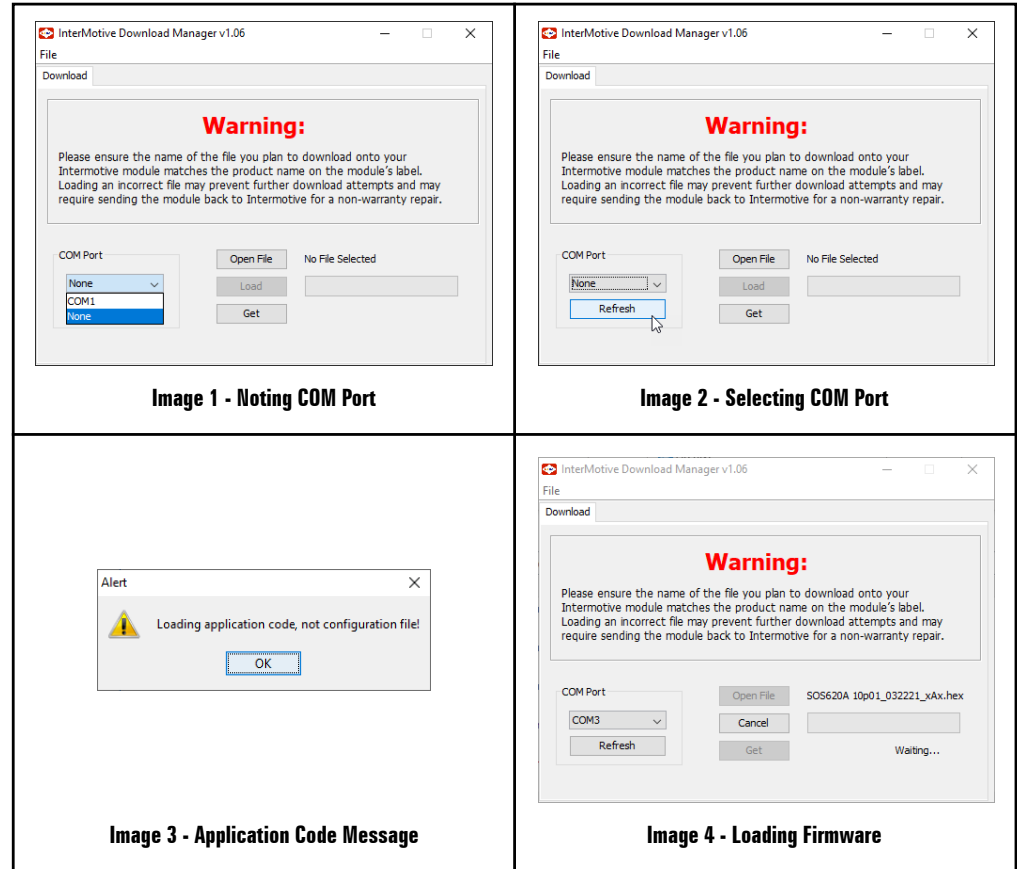
- <https://www.java.com/en/download/manual.jsp>
- There are versions for both 64 bit and 32 bit operating systems. For 64 bit systems, we recommend installing both versions. If unsure, install the 32 bit version. See the below screenshot itemizing which is which.

The screenshot shows a Windows dialog box titled "Which should I choose?". It lists three options: "Windows Online" (1.98 MB), "Windows Offline" (69.74 MB), and "Windows Offline (64-bit)" (79.89 MB). Arrows point from callouts labeled "32 Bit" and "64 Bit" to the "Windows Offline" and "Windows Offline (64-bit)" options respectively. A note at the bottom states: "If you use 32-bit and 64-bit browsers interchangeably, you will need to install both 32-bit and 64-bit Java in order to have the Java plug-in for both browsers. → [FAQ about 64-bit Java for Windows](#)".



Firmware Programming Instructions

1. Connect the bluePRINT Link Firmware Programming Cable to the the bluePRINT Link Module using the 4 pin RJ-9 connector.
2. If bluePRINT Link is already installed in the vehicle, disconnect the vehicle harness (6-pin white connector).
3. Open Intermotive Download Manager and click on COM Port. Note which ports are available. See Image 1.
4. Connect the USB end of the bluePRINT Link Firmware Programming cable to the Windows computer USB port.
5. Click Refresh and reopen the COM port selector as shown in image 2. Select the port that appeared after the refresh. This is the communication port for the bluePRINT Link Firmware Programming Cable.
6. Click Open File to load the firmware file. The latest firmware file can be downloaded from the Dealer Portal. Please note, the file downloadable from the Dealer Portal includes 4 different firmware files identified by their firmware version:
 - 5.xx - This is firmware for the original full size bluePRINT Link module ENGLNMD001.
 - 10.xx - This is firmware for the bluePRINT Link CAN-FD module ENGLMMD001.
 - 20.xx - This is firmware for the bluePRINT Link Single-Wire CAN module ENGLMMD004.
 - 30.xx - This is firmware for the bluePRINT Link Two-Wire CAN module ENGLMMD002.
7. You may receive a notice stating "Loading application code, not configuration file!" like the one shown in image 3. This is ok. Please click on OK.
8. Next click "Load." Before proceeding to the last step, make sure the message below the progress bar says waiting as shown in image 4.
9. The final step is to connect the vehicle harness (6-pin white connector) to bluePRINT Link to supply power during the update process. *Ignition should be active during this step.* Once the process starts, it usually takes 10-15 seconds to complete. During the process, the progress indicator bar will fill up from left to right, and there will be messaging below that indicating what the programmer is currently doing. Lights will rapidly flash on the module during this step.
10. Once complete, unplug the bluePRINT Link Firmware Programming Cable from bluePRINT Link.
11. If additional modules need to be reprogrammed, leave the software open, disconnect the vehicle harness from the additional modules as described in step 1, and then repeat steps 8 through 10.



NOTICE:

Installers and users must comply with all applicable federal, state and local laws regarding use and installation of warning devices.

Improper use or installation may void warranty coverage. To review our Limited Warranty Statement & Return Policy for this or any SoundOff Signal product, visit our website at <https://soundoffsignal.com/support-page/warranty/>. All returned items must be properly packed to prevent damage in transit.

*If you have questions regarding this product, contact **Technical Services**, Monday - Friday, 8 a.m. to 5 p.m. at **1.800.338.7337** (press #4 to skip the automated message). Questions or comments that do not require immediate attention may be emailed to techgroup@soundoffsignal.com.*